

— CREATES MOBILE WORKPLACES —

# VOLKSWAGEN

Caddy Cargo, ID. Buzz Cargo, Transporter T6, Crafter & Amarok



SYSTEM   
EDSTRÖM

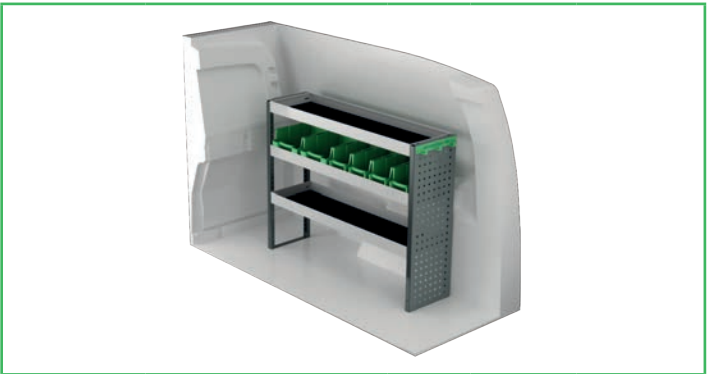
# VW CADDY CARGO

Suggested hours is the recommended mounting time for experienced retailers.

On electric and hybrid vans we recommend mounting by an experienced installer. Batteries and cable harnesses for approximately 400 volt must be taken in consideration. Cost of a floor may be added.



Art.No	LxDxH	Kg	Hr.
F42201	848x300x890 mm	17	2,1



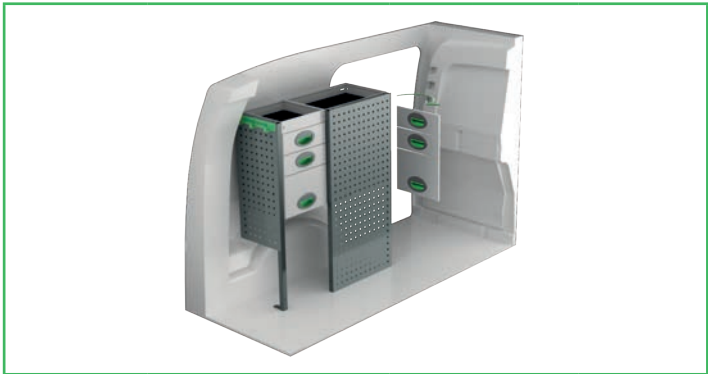
Art.No	LxDxH	Kg	Hr.
F42200	1149x300x890 mm	24	2,1



Art.No	LxDxH	Kg	Hr.
F42203	804x300x1000 mm	35	3,2



Art.No	LxDxH	Kg	Hr.
F42202	1149x300x1000 mm	38	2,9



Art.No	LxDxH	Kg	Hr.
F42205	804x300x1000 mm	43	3,3



Art.No	LxDxH	Kg	Hr.
F42204	1239x300x1075 mm	49	3,4



Art.No	Height	Kg	Hr.
F42210	190	66	6,1



Art.No	Height	Kg	Hr.
F42211	250	71	6,1



Art.No	Height	Kg	Hr.
F42212	360	79	6,1



# VW CADDY CARGO MAXI

Suggested hours is the recommended mounting time for experienced retailers.

On electric and hybrid vans we recommend mounting by an experienced installer. Batteries and cable harnesses for approximately 400 volt must be taken in consideration. Cost of a floor may be added.



Art.No	LxDxH	Kg	Hr.
F42221	1061x300x890 mm	23	2,1



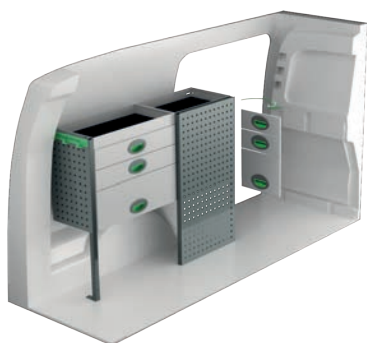
Art.No	LxDxH	Kg	Hr.
F42220	1572x300x890 mm	28	2,6



Art.No	LxDxH	Kg	Hr.
F42223	1107x300x890 mm	35	3,2



Art.No	LxDxH	Kg	Hr.
F42222	1631x300x1000 mm	46	3,0



Art.No	LxDxH	Kg	Hr.
F42225	1107x300x890 mm	46	3,3



Art.No	LxDxH	Kg	Hr.
F42224	1631x300x1075 mm	57	3,4



Art.No	Height	Kg	Hr.
F42230	190	102	6,1



Art.No	Height	Kg	Hr.
F42231	250	108	6,1

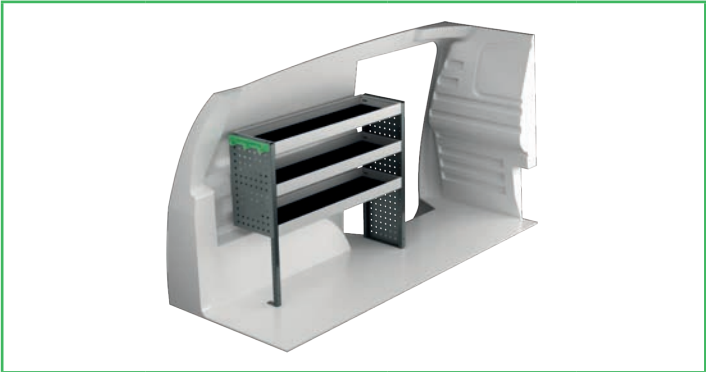


Art.No	Height	Kg	Hr.
F42232	360	117	6,1

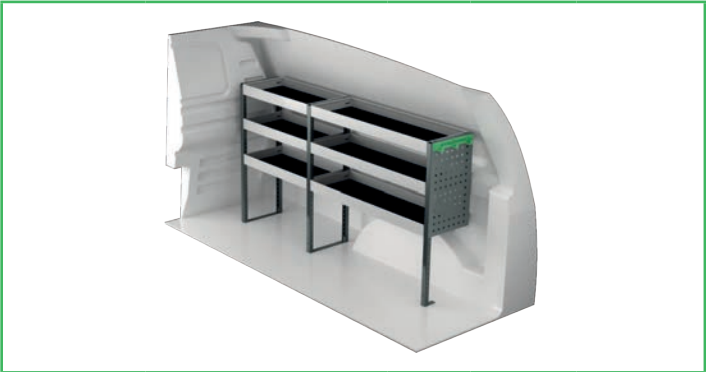
# ID. BUZZ CARGO

Suggested hours is the recommended mounting time for experienced retailers.

On electric and hybrid vans we recommend mounting by an experienced installer. Batteries and cable harnesses for approximately 400 volt must be taken in consideration. Cost of a floor may be added.



Art.No	LxDxH	Kg	Hr.
F42251	1061x300x890 mm	20	2,1



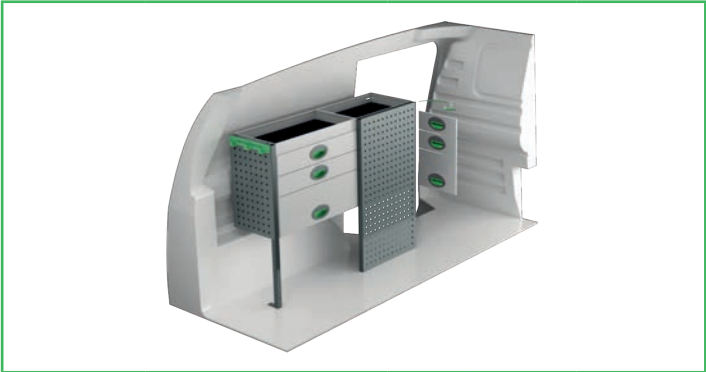
Art.No	LxDxH	Kg	Hr.
F42250	1606x300x890 mm	26	2,6



Art.No	LxDxH	Kg	Hr.
F42253	1107x300x890 mm	35	3,2



Art.No	LxDxH	Kg	Hr.
F42252	1631x300x890 mm	41	3,0



Art.No	LxDxH	Kg	Hr.
F42255	1107x300x890 mm	46	3,3



Art.No	LxDxH	Kg	Hr.
F42254	1606x300x890 mm	44	3,1



Art.No	Height	Kg	Hr.
F42260	190	76	6,2



Art.No	Height	Kg	Hr.
F42261	250	75	6,1

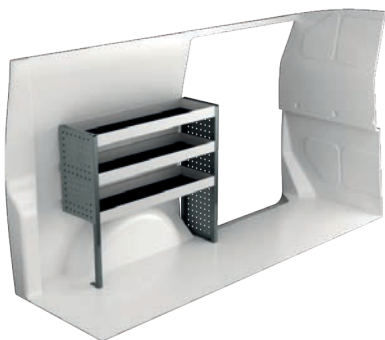


Art.No	Height	Kg	Hr.
F42262	360	92	6,2

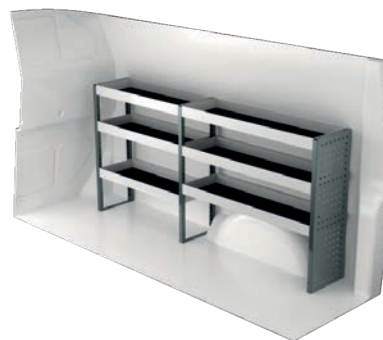
# VW TRANSPORTER T6 3000 mm wheel base

Suggested hours is the recommended mounting time for experienced retailers.

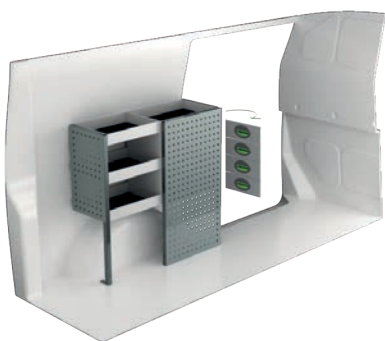
On electric and hybrid vans we recommend mounting by an experienced installer. Batteries and cable harnesses for approximately 400 volt must be taken in consideration. Cost of a floor may be added.



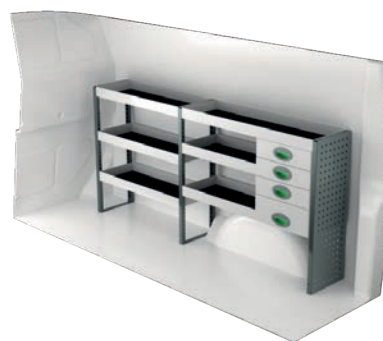
Art.No	LxDxH	Kg	Hr.
F41641	970x300x890 mm	19	2,2



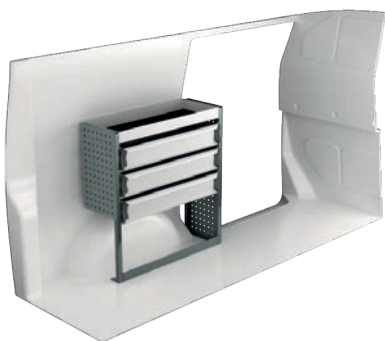
Art.No	LxDxH	Kg	Hr.
F41640	1875x300x890 mm	29	2,9



Art.No	LxDxH	Kg	Hr.
F41643	894x300x890 mm	35	3,1



Art.No	LxDxH	Kg	Hr.
F41642	1875x300x890 mm	41	3,3



Art.No	LxDxH	Kg	Hr.
F41645	848x300x890 mm	25	2,4



Art.No	LxDxH	Kg	Hr.
F41644	1875x300x1185 mm	64	4,6



Art.No	Height	Kg	Hr.
F41650	190	95	7,0



Art.No	Height	Kg	Hr.
F41651	250	107	6,9

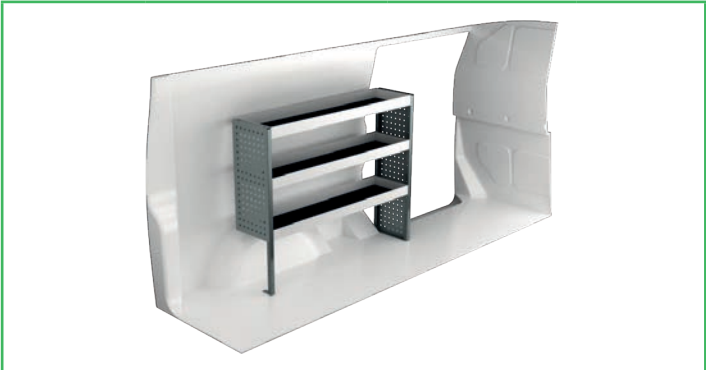


Art.No	Height	Kg	Hr.
F41654	360	119	6,9

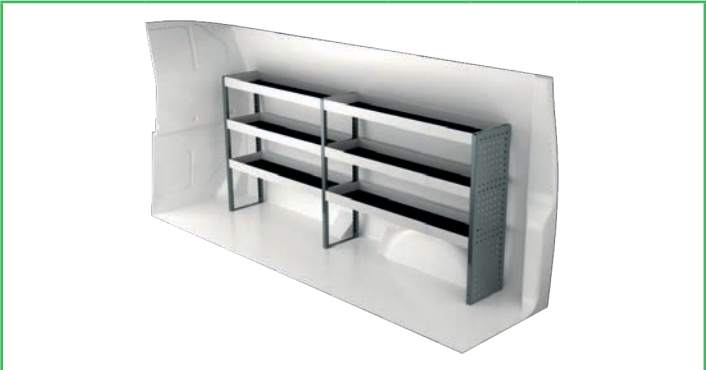
# VW TRANSPORTER T6 3400 mm wheel base

Suggested hours is the recommended mounting time for experienced retailers.

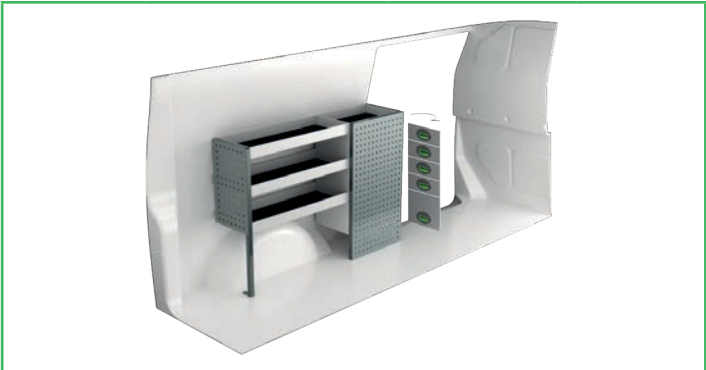
On electric and hybrid vans we recommend mounting by an experienced installer. Batteries and cable harnesses for approximately 400 volt must be taken in consideration. Cost of a floor may be added.



Art.No	LxDxH	Kg	Hr.
F41661	1238x300x1000 mm	23	2,3



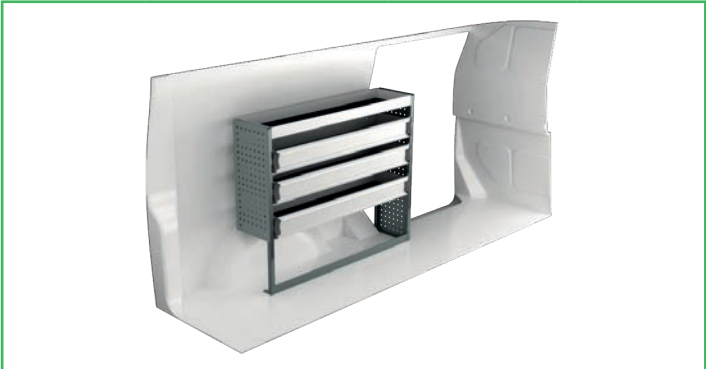
Art.No	LxDxH	Kg	Hr.
F41660	2267x300x1000 mm	36	2,9



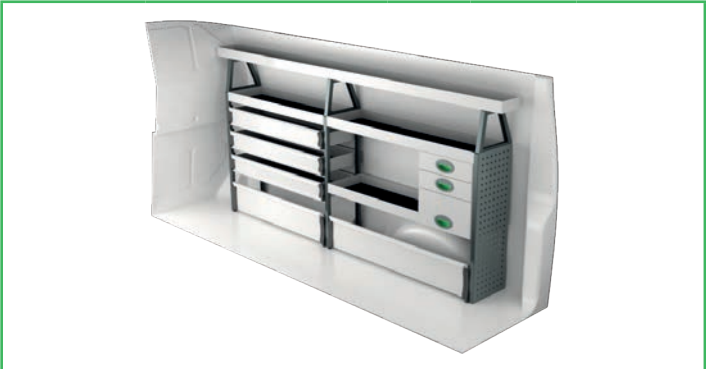
Art.No	LxDxH	Kg	Hr.
F41663	1286x300x890 mm	44	3,1



Art.No	LxDxH	Kg	Hr.
F41662	2267x300x890 mm	44	3,3



Art.No	LxDxH	Kg	Hr.
F41665	1240x300x1000 mm	35	2,5



Art.No	LxDxH	Kg	Hr.
F41664	2267x300x1185 mm	69	4,5



Art.No	Height	Kg	Hr.
F41670	190	97	7,0



Art.No	Height	Kg	Hr.
F41671	250	109	6,9



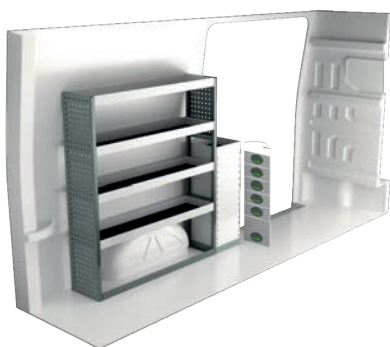
Art.No	Height	Kg	Hr.
F41674	360	121	6,9



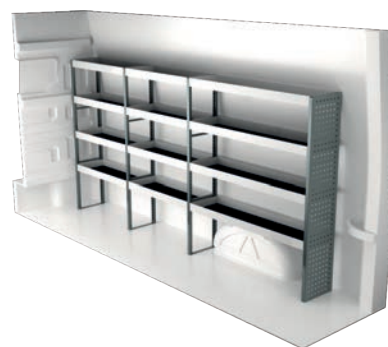
# VW CRAFTER L3H3 3640 mm wheel base

Suggested hours is the recommended mounting time for experienced retailers.

On electric and hybrid vans we recommend mounting by an experienced installer. Batteries and cable harnesses for approximately 400 volt must be taken in consideration. Cost of a floor may be added.



Art.No	LxDxH	Kg	Hr.
F41901	1539x300x1440 mm	55	3,3



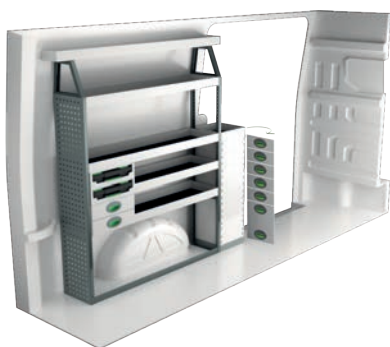
Art.No	LxDxH	Kg	Hr.
F41900	2779x300x1440 mm	60	4,4



Art.No	LxDxH	Kg	Hr.
F41903	1539x300x1440 mm	78	4,7



Art.No	LxDxH	Kg	Hr.
F41902	2779x300x1440 mm	87	4,4



Art.No	LxDxH	Kg	Hr.
F41905	1662x300x1735 mm	79	5,4



Art.No	LxDxH	Kg	Hr.
F41904	2904x470x1440 mm	144	5,8



Art.No	LxDxH	Kg	Hr.
F41907	1599x470x855 mm	109	4,5

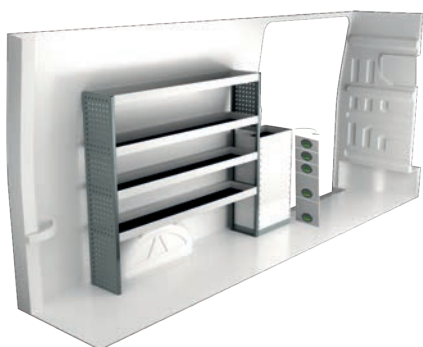


Art.No	LxDxH	Kg	Hr.
F41906	2869x300x1735 mm	119	6,6

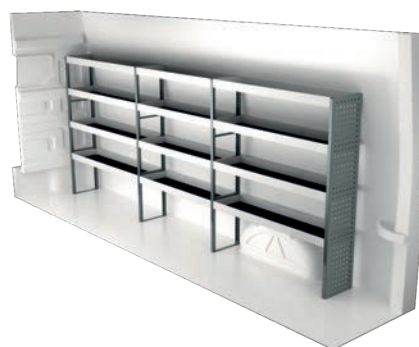
# VW CRAFTER L4H3 4490 mm wheel base

Suggested hours is the recommended mounting time for experienced retailers.

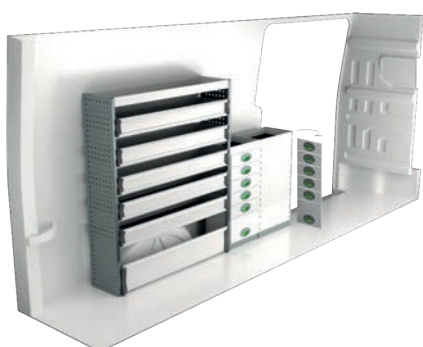
On electric and hybrid vans we recommend mounting by an experienced installer. Batteries and cable harnesses for approximately 400 volt must be taken in consideration. Cost of a floor may be added.



Art.No	LxDxH	Kg	Hr.
F41921	2101x300x1440 mm	66	3,3



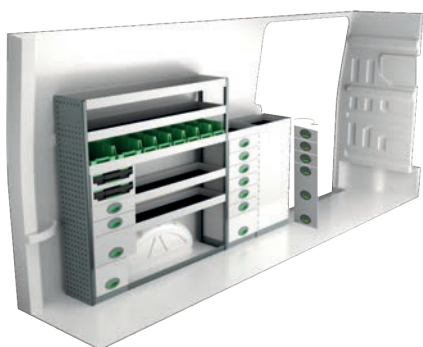
Art.No	LxDxH	Kg	Hr.
F41920	3474x300x1440 mm	72	4,4



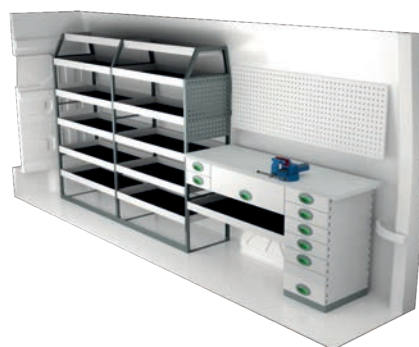
Art.No	LxDxH	Kg	Hr.
F41923	2101x300x1440 mm	112	5,0



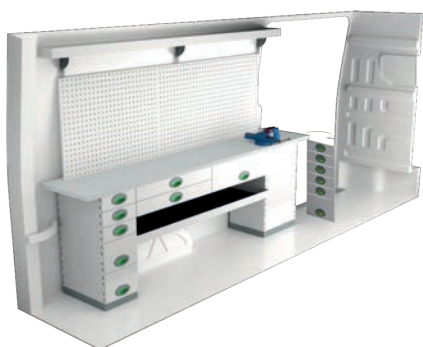
Art.No	LxDxH	Kg	Hr.
F41922	3596x300x1440 mm	112	4,5



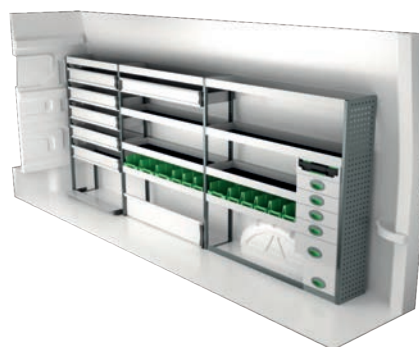
Art.No	LxDxH	Kg	Hr.
F41925	2314x300x1440 mm	133	5,9



Art.No	LxDxH	Kg	Hr.
F41924	3565x470x1670 mm	182	5,8



Art.No	LxDxH	Kg	Hr.
F41927	2340x470x855 mm	165	5,3



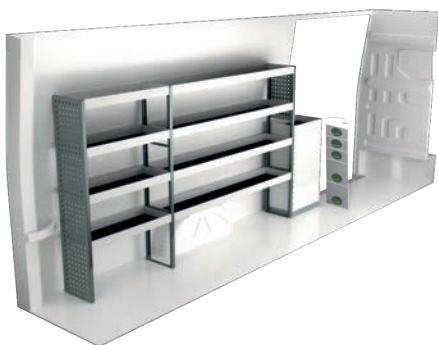
Art.No	LxDxH	Kg	Hr.
F41926	3597x300x1440 mm	133	6,3



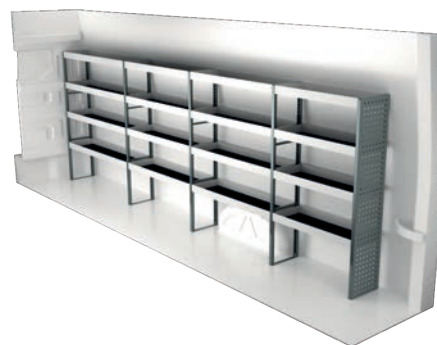
# VW CRAFTER L5H3 4490 mm wheel base

Suggested hours is the recommended mounting time for experienced retailers.

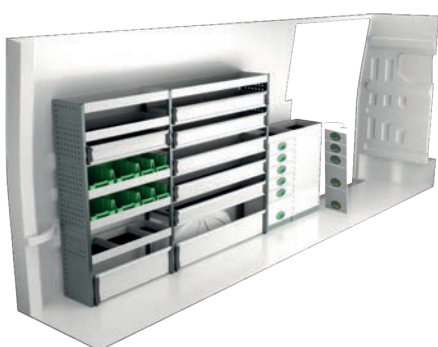
On electric and hybrid vans we recommend mounting by an experienced installer. Batteries and cable harnesses for approximately 400 volt must be taken in consideration. Cost of a floor may be added.



Art.No	LxDxH	Kg	Hr.
F41941	2916x300x1440 mm	80	3,9



Art.No	LxDxH	Kg	Hr.
F41940	4110x300x1440 mm	83	5,0



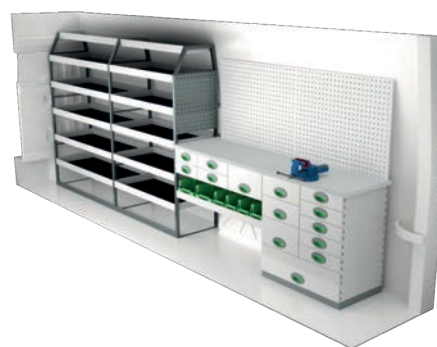
Art.No	LxDxH	Kg	Hr.
F41943	2916x300x1440 mm	136	6,3



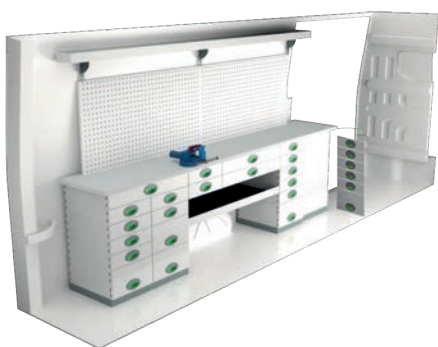
Art.No	LxDxH	Kg	Hr.
F41942	4187x300x1440 mm	120	5,3



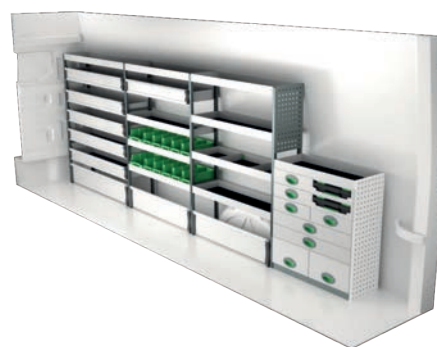
Art.No	LxDxH	Kg	Hr.
F41945	2916x300x1440 mm	146	7,2



Art.No	LxDxH	Kg	Hr.
F41944	4136x470x1670 mm	230	6,8



Art.No	LxDxH	Kg	Hr.
F41947	2822x470x855 mm	233	7,2

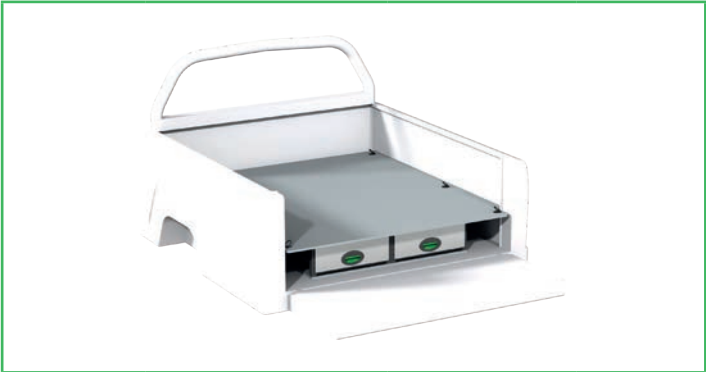


Art.No	LxDxH	Kg	Hr.
F41946	4098x300x1440 mm	157	6,9

# VW AMAROK

Suggested hours is the recommended mounting time for experienced retailers.

On electric and hybrid vans we recommend mounting by an experienced installer. Batteries and cable harnesses for approximately 400 volt must be taken in consideration. Cost of a floor may be added.



Art.No	Height	Kg	Hr.	
F45200	214 mm	59	5,7	2 091,55



Art.No	Height	Kg	Hr.	
F45201	220 mm	57	2,5	964,98

## INFORMATION



### GENERALLY

The kits include what you see in the drawing as well as installation parts, rubber mats to all shelves and foam to the drawers. System Edström Billnredningar AB is certified according to SS-EN ISO 9001:2015 to secure the administrative quality and to give us the possibility to keep a high accuracy on deliveries.

All material used in System Edström can be recycled to 100%. We are also certified according to SS-EN ISO 14001:2015.



### REMEMBER

Now that you have chosen to have System Edström in your vehicle you have taken the first and most important step to make your mobile workshop safe and functional. From here on it is up to you how safe and functional your working place will be.

Remember;

You as the driver has the full responsibility if you or any one else is injured if the cargo is poorly secured. It is also your responsibility to make sure that the interior is mounted in the safest way possible whatever your choice of workshop, even if they are professionals with knowhow and long experience.

Make sure NOT to exceed the maximum payload of the vehicle.

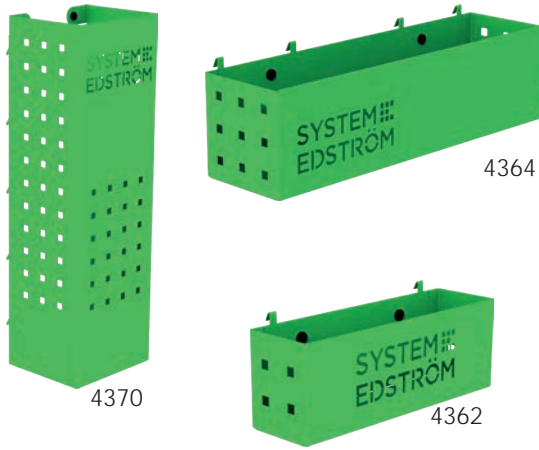


### SECURITY

Our products are tested in two ways, the first and most important is two crashtests, one (ECE 17:07) performed by Milbrook in England and another one performed by Valutec in France (INRS NS286). Learn more about us on our homepage, [www.systemedstrom.com](http://www.systemedstrom.com).



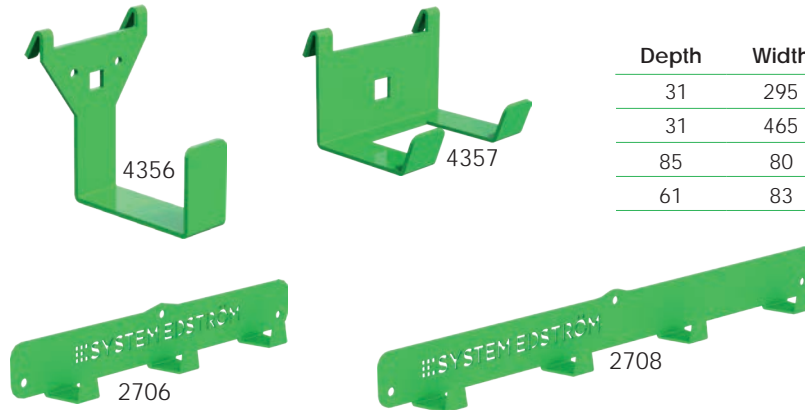
### Pegboard tray



Depth	Width	Height	Kg	Part.No
82	200	80	0,5	4360
82	285	102	0,8	4362
122	455	122	1,5	4364
153	179	575	3,0	4370

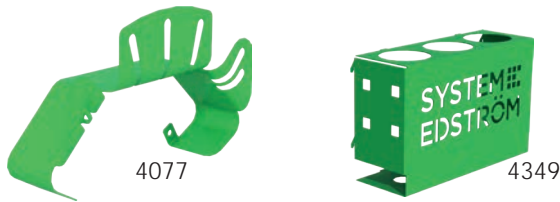
A number of different trays that solve (almost) all storage problems.

### Hooks



Depth	Width	Height	Kg	Part.No
31	295	40	0,3	2706
31	465	40	0,5	2708
85	80	100	0,2	4356
61	83	55	0,1	4357

### Hose/Cable rack



Depth	Width	Height	Kg	Part.No
79	267	168	0,5	4077

### Tube holder

Depth	Width	Height	Kg	Part.No
66	194	123	0,4	4349

### Internal ladder holder



Length	Kg	Part.No
2400	5,5	T8900

Store your ladder on the inside of the roof, pull it back to the rear door in a simple operation. The aluminum rail comes in two parts with a joining piece.

### Plastic bin for shelves



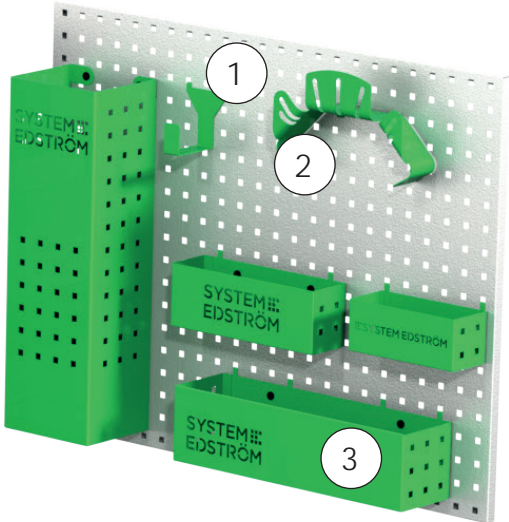
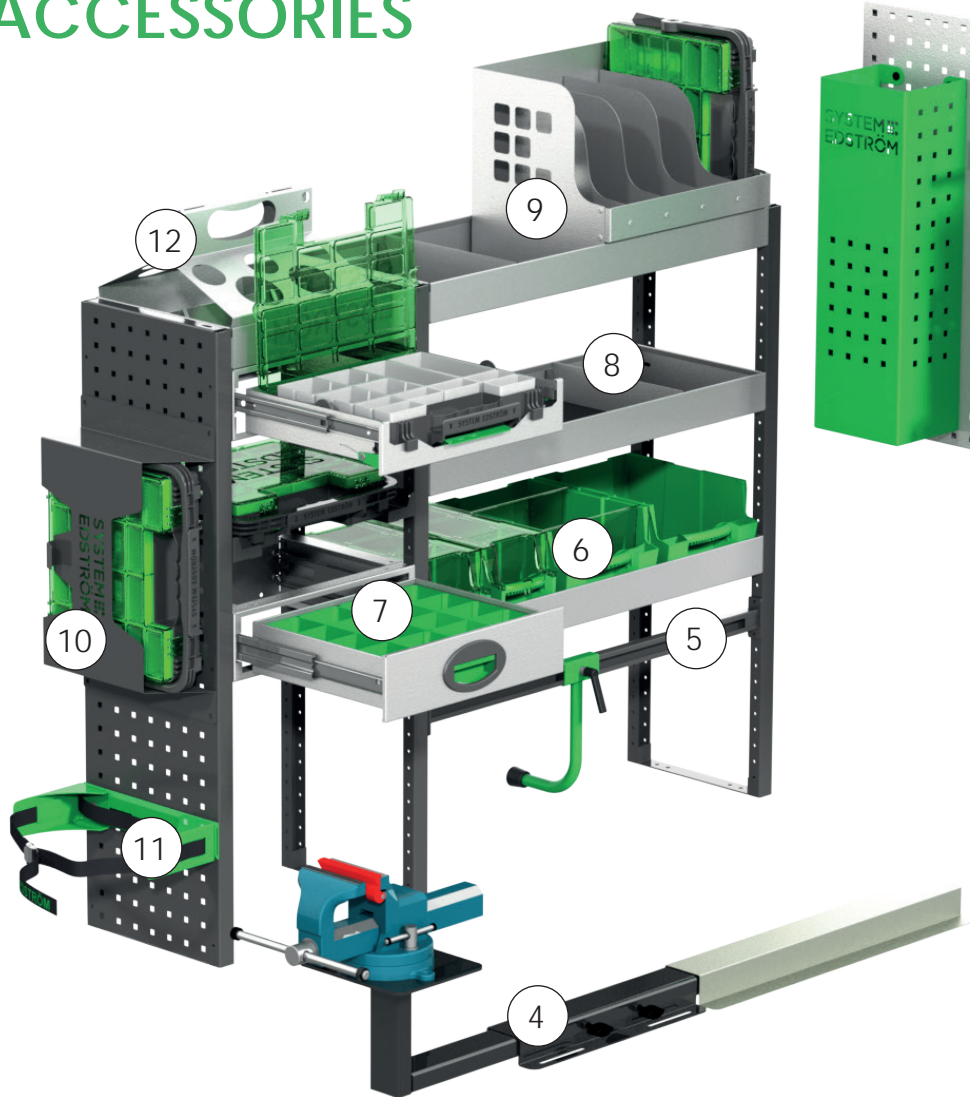
Depth	Width	Height	Kg	Part.No
300	145	154	0,4	3050
300	235	154	0,5	3052
470	145	154	0,5	3055
470	235	154	0,5	3057

### Drawer inserts

Depth	Width	Height	Kg	Part.No
300	127	70	0,2	3001
300	172	70	0,3	3003
470	127	70	0,4	3005
470	172	70	0,4	3007

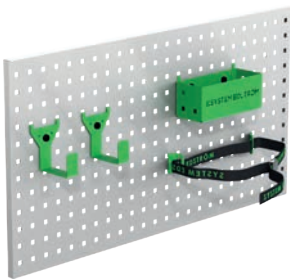


# ACCESSORIES



Pos.	Description
1	Universal hook
2	Cable/Hose rack
3	Pegboard basket
4	Vice and holders
5	Case support
6	Plastic bins
7	Drawer inserts
8	Shelf dividers
9	Tool case/File holder
10	Tool case
11	Gas bottle holders
12	Can/Tube holder

Accessory package No. 1

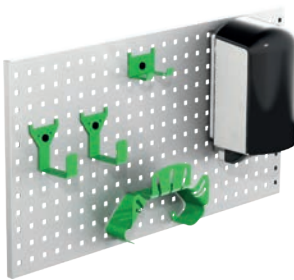


Art.No

F11001

Pegboard not included.

Accessory package No. 2

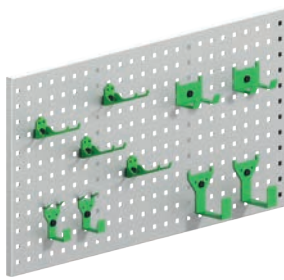


Art.No

F11002

Pegboard not included.

Accessory package No. 3



Art.No

F11004

Pegboard not included.

For more information:  
[www.systemedstrom.co.uk](http://www.systemedstrom.co.uk)



Up to 5 years  
warranty



Crash tested



Made in Sweden

**SYSTEM  
EDSTRÖM**

EDSTRÖM OF SWEDEN LTD.  
7, Cronin Road  
Weldon South Industrial Estate, Corby  
Northamptonshire NN18 8 AQ

CONTACT  
Telephone 01536 203040  
Email [info@edstrom.co.uk](mailto:info@edstrom.co.uk)  
Homepage [www.systemedstrom.co.uk](http://www.systemedstrom.co.uk)