

— CREATES MOBILE WORKPLACES —

# NISSAN

Townstar, Primastar & Interstar



**SYSTEM**   
**EDSTRÖM**

# NISSAN TOWNSTAR L1

Suggested hours is the recommended mounting time for experienced retailers.

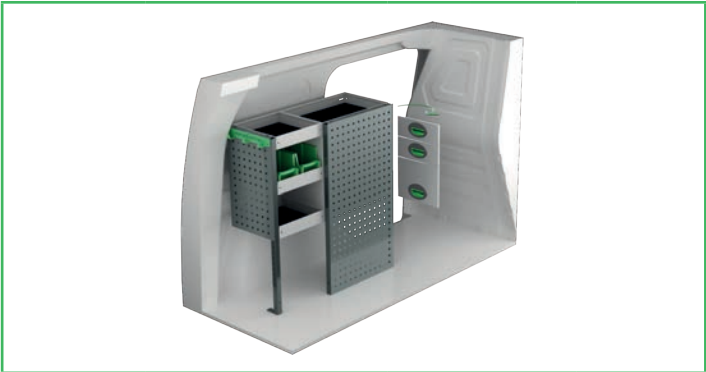
On electric and hybrid vans we recommend mounting by an experienced installer. Batteries and cable harnesses for approximately 400 volt must be taken in consideration. Cost of a floor may be added.



Art.No	LxDxH	Kg	Hr.
F42321	848x300x890 mm	17	2,9



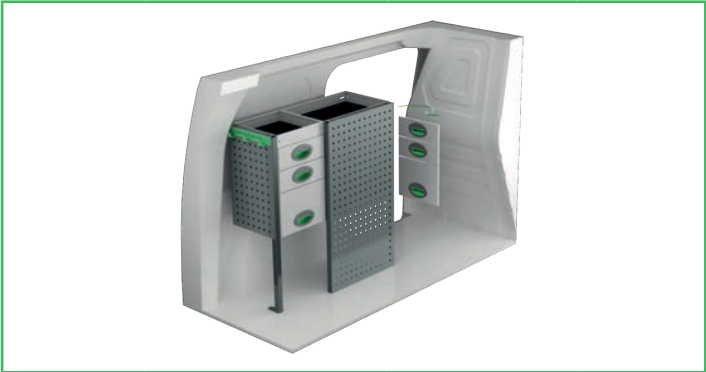
Art.No	LxDxH	Kg	Hr.
F42320	1239x300x890 mm	23	2,1



Art.No	LxDxH	Kg	Hr.
F42323	804x300x890 mm	31	3,2



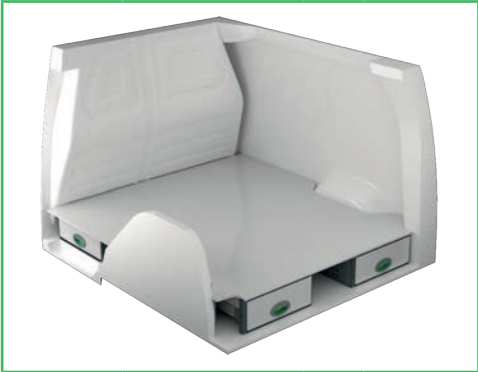
Art.No	LxDxH	Kg	Hr.
F42322	1239x300x890 mm	32	2,9



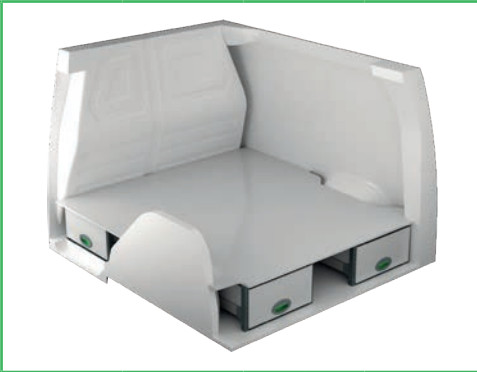
Art.No	LxDxH	Kg	Hr.
F42325	804x300x890 mm	40	3,3



Art.No	LxDxH	Kg	Hr.
F42324	1239x300x890 mm	43	3,7



Art.No	Height	Kg	Hr.
F42330	190	76	6,3



Art.No	Height	Kg	Hr.
F42331	250	75	6,1



Art.No	Height	Kg	Hr.
F42332	360	90	6,3

# NISSAN PRIMASTAR L1H1

Suggested hours is the recommended mounting time for experienced retailers.

On electric and hybrid vans we recommend mounting by an experienced installer. Batteries and cable harnesses for approximately 400 volt must be taken in consideration. Cost of a floor may be added.



Art.No	LxDxH	Kg	Hr.
F40841	1107x300x1000 mm	40	3,1



Art.No	LxDxH	Kg	Hr.
F40840	1998x300x1000 mm	34	2,9



Art.No	LxDxH	Kg	Hr.
F40843	1107x300x1000 mm	47	5,0



Art.No	LxDxH	Kg	Hr.
F40842	1998x300x1220 mm	59	4,4



Art.No	LxDxH	Kg	Hr.
F40845	1147x300x1220 mm	51	5,0



Art.No	LxDxH	Kg	Hr.
F40844	1998x300x1000 mm	52	4,0



Art.No	Height	Kg	Hr.
F40850	190	107	7,5



Art.No	Height	Kg	Hr.
F40851	250	123	7,8



Art.No	Height	Kg	Hr.
F40852	360	137	7,8

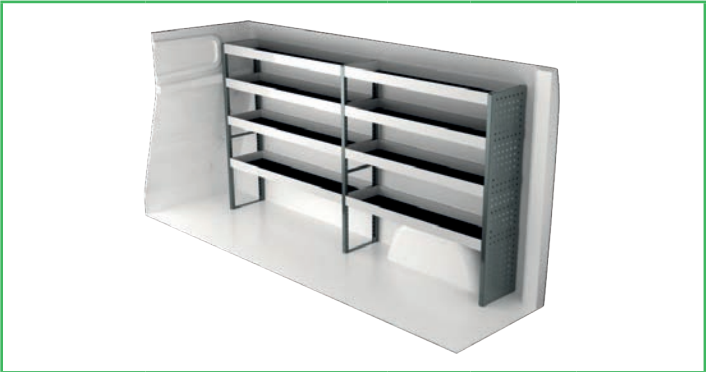
# NISSAN PRIMASTAR L2H1

Suggested hours is the recommended mounting time for experienced retailers.

On electric and hybrid vans we recommend mounting by an experienced installer. Batteries and cable harnesses for approximately 400 volt must be taken in consideration. Cost of a floor may be added.



Art.No	LxDxH	Kg	Hr.
F40861	1530x300x1220 mm	62	3,3



Art.No	LxDxH	Kg	Hr.
F40860	2356x300x1220 mm	48	3,1



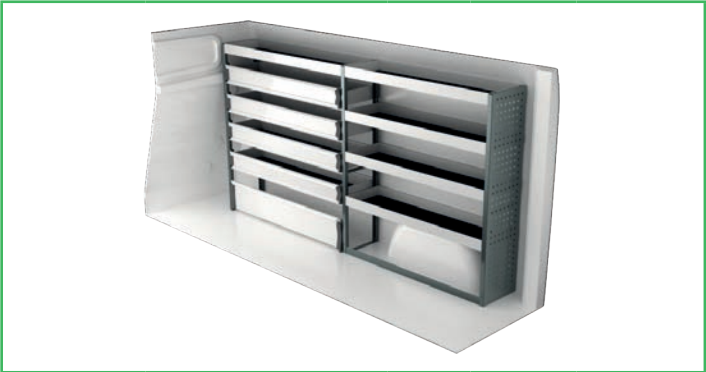
Art.No	LxDxH	Kg	Hr.
F40863	1500x300x1000 mm	63	5,0



Art.No	LxDxH	Kg	Hr.
F40862	2356x300x1000 mm	57	4,5



Art.No	LxDxH	Kg	Hr.
F40865	1500x300x1000 mm	83	5,5



Art.No	LxDxH	Kg	Hr.
F40864	2356x300x1220 mm	66	4,3



Art.No	Height	Kg	Hr.
F40870	190	109	7,5



Art.No	Height	Kg	Hr.
F40871	250	125	7,8

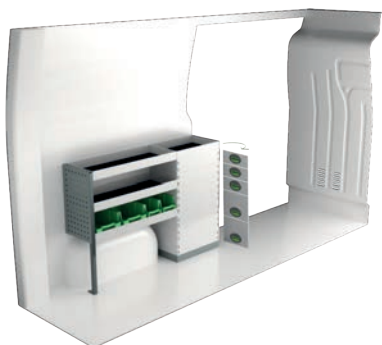


Art.No	Height	Kg	Hr.
F40872	360	139	7,8

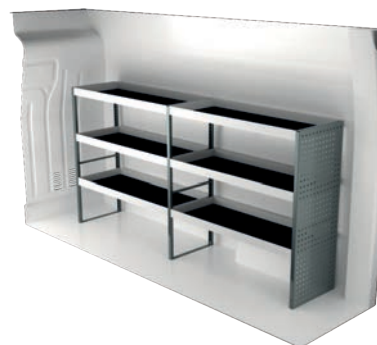
# NISSAN INTERSTAR L2H2

Suggested hours is the recommended mounting time for experienced retailers.

On electric and hybrid vans we recommend mounting by an experienced installer. Batteries and cable harnesses for approximately 400 volt must be taken in consideration. Cost of a floor may be added.



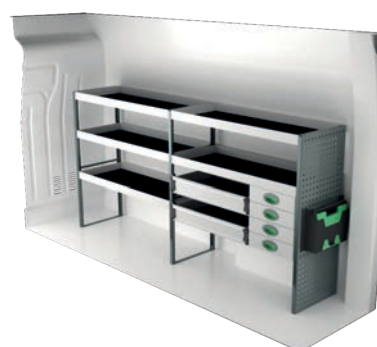
Art.No	LxDxH	Kg	Hr.
F40501	1287x300x890 mm	44	2,8



Art.No	LxDxH	Kg	Hr.
F40500	2449x470x1220 mm	56	2,5



Art.No	LxDxH	Kg	Hr.
F40503	1319x300x1220 mm	69	4,1



Art.No	LxDxH	Kg	Hr.
F40502	2449x470x1220 mm	86	3,9



Art.No	LxDxH	Kg	Hr.
F40505	1330x470x855 mm	100	4,1



Art.No	LxDxH	Kg	Hr.
F40504	2449x300x1515 mm	93	5,2



Art.No	LxDxH	Kg	Hr.
F40507	1242x470x1220 mm	61	2,8

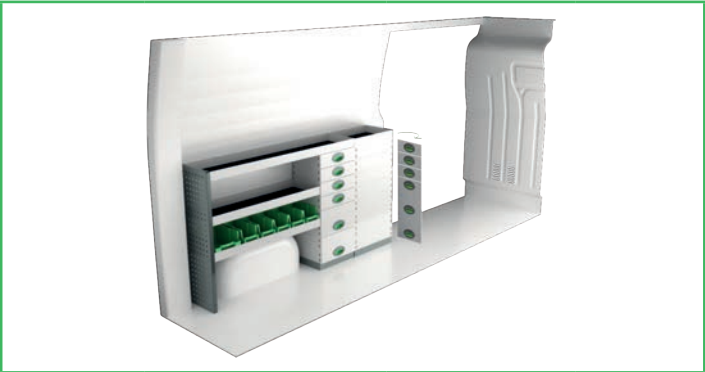


Art.No	LxDxH	Kg	Hr.
F40506	2449x470x1510 mm	109	4,4

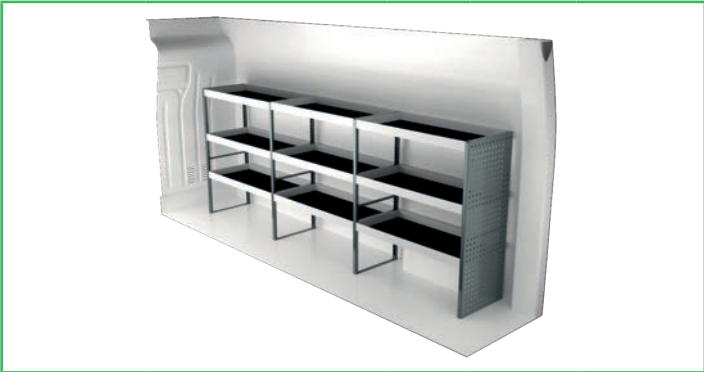
# NISSAN INTERSTAR L3H2

Suggested hours is the recommended mounting time for experienced retailers.

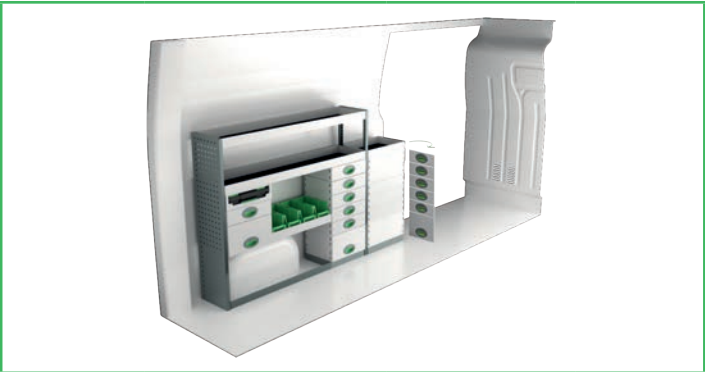
On electric and hybrid vans we recommend mounting by an experienced installer. Batteries and cable harnesses for approximately 400 volt must be taken in consideration. Cost of a floor may be added.



Art.No	LxDxH	Kg	Hr.
F40521	1892x300x1000 mm	83	4,1



Art.No	LxDxH	Kg	Hr.
F40520	3120x470x1220 mm	71	3,4



Art.No	LxDxH	Kg	Hr.
F40523	1924x300x1220 mm	96	4,8



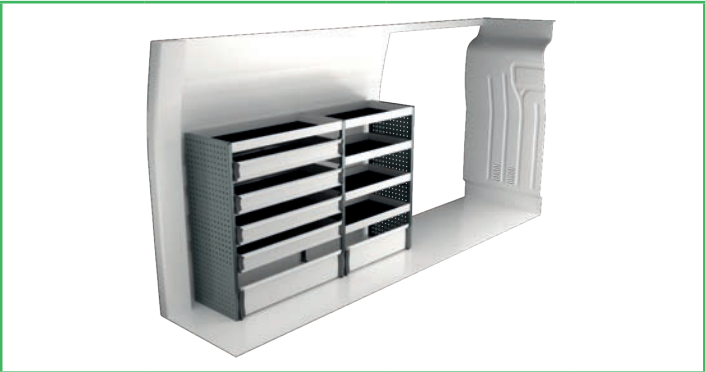
Art.No	LxDxH	Kg	Hr.
F40522	3120x470x1220 mm	111	5,2



Art.No	LxDxH	Kg	Hr.
F40525	2071x470x855 mm	150	4,5



Art.No	LxDxH	Kg	Hr.
F40524	3086x300x1735 mm	144	8,5



Art.No	LxDxH	Kg	Hr.
F40527	1879x470x1220 mm	79	4,3

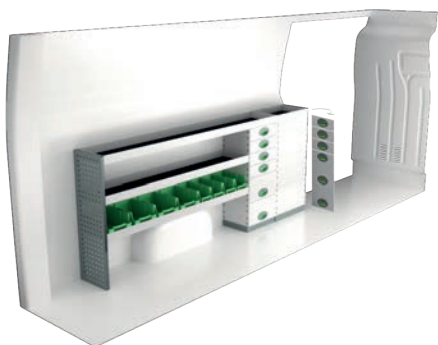


Art.No	LxDxH	Kg	Hr.
F40526	3054x470x1526 mm	148	5,0

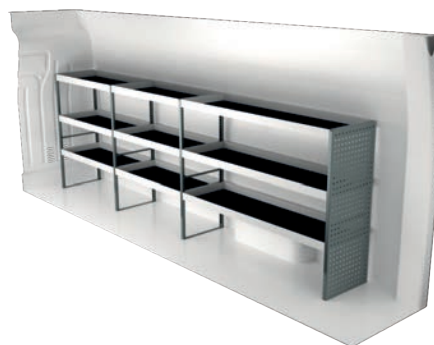
# NISSAN INTERSTAR L4H2

Suggested hours is the recommended mounting time for experienced retailers.

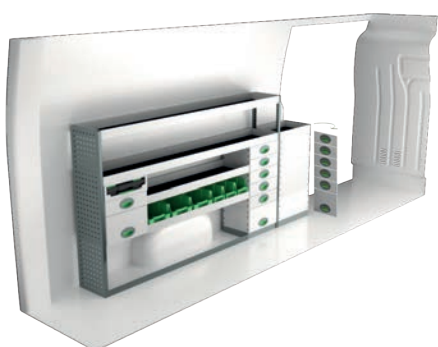
On electric and hybrid vans we recommend mounting by an experienced installer. Batteries and cable harnesses for approximately 400 volt must be taken in consideration. Cost of a floor may be added.



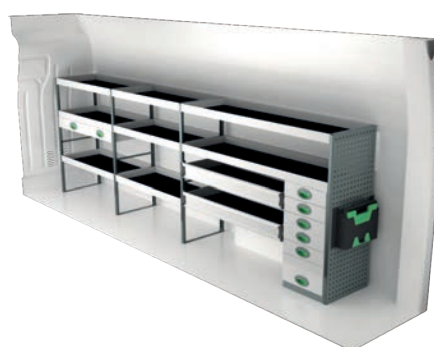
Art.No	LxDxH	Kg	Hr.
F40561	2463x300x1000 mm	93	4,1



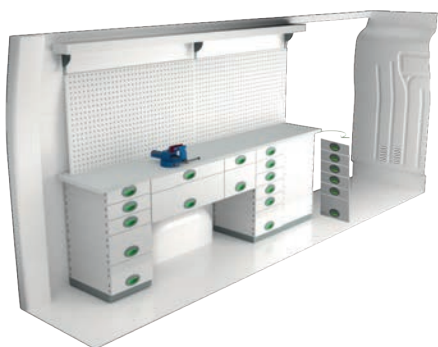
Art.No	LxDxH	Kg	Hr.
F40560	3691x470x1220 mm	82	3,4



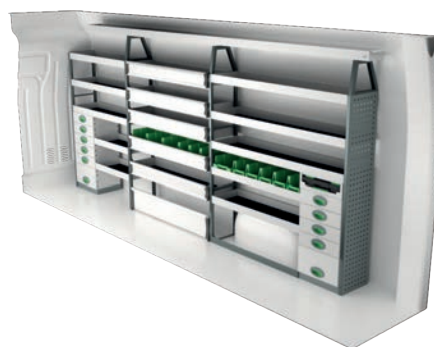
Art.No	LxDxH	Kg	Hr.
F40563	2495x300x1220 mm	115	4,8



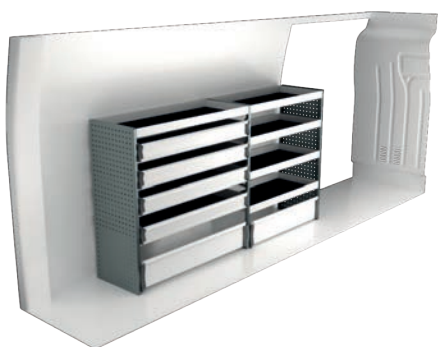
Art.No	LxDxH	Kg	Hr.
F40562	3780x470x1220 mm	139	5,2



Art.No	LxDxH	Kg	Hr.
F40565	2430x470x855 mm	199	6,1



Art.No	LxDxH	Kg	Hr.
F40564	3691x300x1735 mm	165	8,7



Art.No	LxDxH	Kg	Hr.
F40567	2271x470x1220 mm	89	4,3



Art.No	LxDxH	Kg	Hr.
F40566	3805x470x1526 mm	206	5,6

# INFORMATION



## GENERALLY

The kits include what you see in the drawing as well as installation parts, rubber mats to all shelves and foam to the drawers.

System Edström Bilinredningar AB is certified according to SS-EN ISO 9001:2015 to secure the administrative quality and to give us the possibility to keep a high accuracy on deliveries.

All material used in System Edström can be recycled to 100%. We are also certified according to SS-EN ISO 14001:2015.



## REMEMBER

Now that you have chosen to have System Edström in your vehicle you have taken the first and most important step to make your mobile workshop safe and functional. From here on it is up to you how safe and functional your working place will be.

You as the driver has the full responsibility if you or any one else is injured if the cargo is poorly secured. It is also your responsibility to make sure that the interior is mounted in the safest way possible whatever your choice of workshop, even if they are professionals with knowhow and long experience.

Make sure NOT to exceed the maximum payload of the vehicle.



## SECURITY

Our products are tested in two ways, the first and most important is two crashtests, one (ECE 17:07) performed by Milbrook in England and another one performed by Valutec in France (INRS NS286).

Learn more about us on our homepage, [www.systemedstrom.com](http://www.systemedstrom.com).



### Vice

Depth	Width	Height	Kg	Part.No
360	135	140	10,3	5004

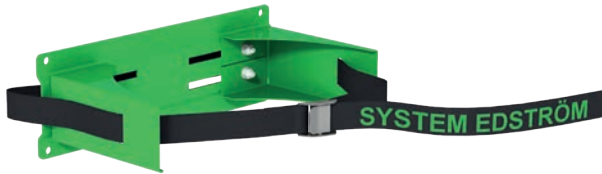
The forged vice is complete with pipe jaw and turning plate. Max opening 140 mm.



### Vice Holders

Depth	Width	Height	Kg	Part.No
1110	210	195	9,4	5012
1110	210	80	8,9	5013

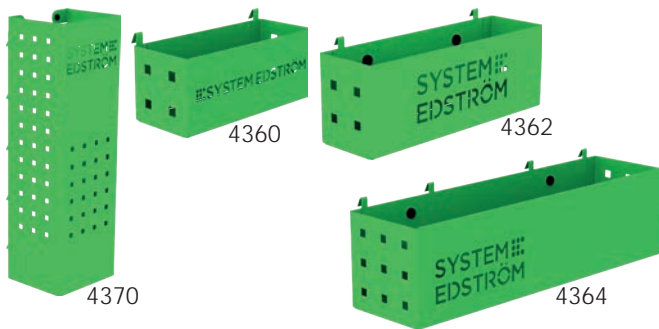
Plate measurement 180x210 mm. Cover 2950 is included.



### Gas bottle holder adjustable

Depth	Width	Height	Tube Ø	Kg	Part.No
150	300	97	< 300	0,9	2910

Liquefied petroleum gas P6 (bottles with 320 mm Ø can be stored after modification).



### Pegboard tray

Depth	Width	Height	Kg	Part.No
82	200	80	0,5	4360
82	285	102	0,8	4362
122	455	122	1,5	4364
153	179	575	3,0	4370

A number of different trays that solve (almost) all storage problems.



### Internal ladder holder

Length	Kg	Part.No
2400	5,5	T8900

Store your ladder on the inside of the roof, pull it back to the rear door in a simple operation. The aluminum rail comes in two parts with a joining piece.



### Hose/Cable rack

Depth	Width	Height	Kg	Part.No
79	267	168	0,5	4077

### Tube holder

66	194	123	0,4	4349
----	-----	-----	-----	------



### Universal hook

Depth	Width	Height	Kg	Part.No
85	80	100	0,2	4356
61	83	55	0,1	4357

Simplicity at its best, heavy duty hooks, to be mount on a pegboard or hang it on the edge of a shelf.



### Plastic bin for shelves

Depth	Width	Height	Kg	Part.No
300	145	154	0,4	3050
300	235	154	0,5	3052
470	145	154	0,5	3055
470	235	154	0,5	3057

### Transparent lid for plastic bins

Depth	Width	Fits	Kg	Part.No
300	150	3050	0,2	3060
300	240	3052	0,2	3062
470	150	3055	0,2	3065
470	240	3057	0,4	3067

### Dividers for plastic bins

Width	Height	Fits	Part.No
140	154	3050, 55	3070
230	154	3052, 57	3072

### Bracket for dropfront shelves

Depth	Kg	Part.No
300	0,1	3081
470	0,2	3082



### Clothes hook

Depth	Width	Height	Kg	Part.No
31	295	40	0,3	2706
31	465	40	0,5	2708

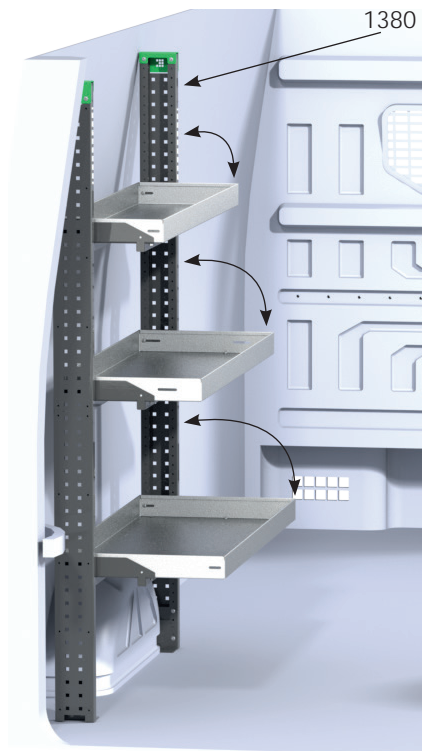
We call it a clothes hook but, needless to say, you can use it to hang up whatever you want on it.



### Strap with brackets

Information	Width	Part.No
1200 mm, nylon strap	25	4365
1000 mm, elastic strap	25	4366

The brackets will fit on our pegboards.



Flexi shelf frame					
Depth	Width	Height	Info.	Kg	Part.No
112	32	1788	2/set	11,8	1380
112	31	1788	1/set	4,9	1382

Flexi shelf support					
Depth	Width	Height	Shelf width	Kg	Part.No
275	830	83	784	3,1	1308
275	1043	83	997	3,5	1312
275	1222	83	1176	3,9	1316
275	1435	83	1389	4,4	1322
275	1614	83	1568	4,8	1326

Flexi shelf bracket		
Info.	Kg	Part.No
160 mm deep shelves, 2/set	0,6	1340
300, 400 & 470 mm deep shelves, 2/set	1,4	1342

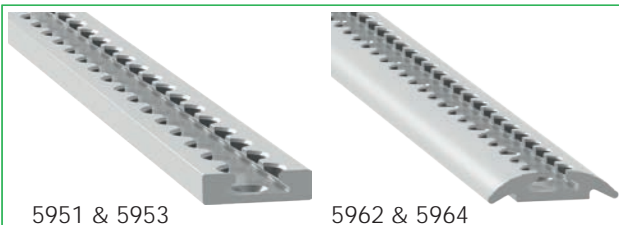
Flexi gas damper		
Info.	Kg	Part.No
2/set	0,1	1386

The shelf frames can be cut to fit your configuration. Loading capacity increases to 100 kg per shelf when mounted in a Flexirack. Shelves are adjustable to 4 pre-set angle on installation of 0, 4, 8 & 12 degrees.

Choose your shelves , 300, 400 and/or 470 mm depth. Our dropfront shelves will also fit, 300 and 470 mm depth. A shelf bracket will fit all different shelf depths.

Use the shelf bracket if you want to combine 160 mm deep shelves with other depths. 160 mm shelves are fixed, not foldable.





5951 & 5953

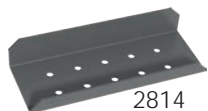
5962 & 5964

### Airline tracks

Length	Kg	Part.No
295	0,2	5951
465	0,3	5953
1000	0,8	5962
1500	1,2	5964



2813



2814



5904



5905



5900

5901

### Airline lashing rings

Information	Kg	Part.No
Round aluminium	0,1	5900
Straight black plastic	0,1	5901



5910



5911

### Airline brackets

Information	Kg	Part.No
Angle bracket 53x80x112 mm	0,2	2813
Support plinth bracket 175x66x15/32 mm	0,3	2814
Bracket for shelf frame	-	5904
Bracket for plywood	-	5905
T-nut 2xM6	-	5910
T-nut 3xM6	-	5911
Mounting bolt M8x25	-	5913
Clamp fitting	0,3	5915



5913



5915



5931 - 5935



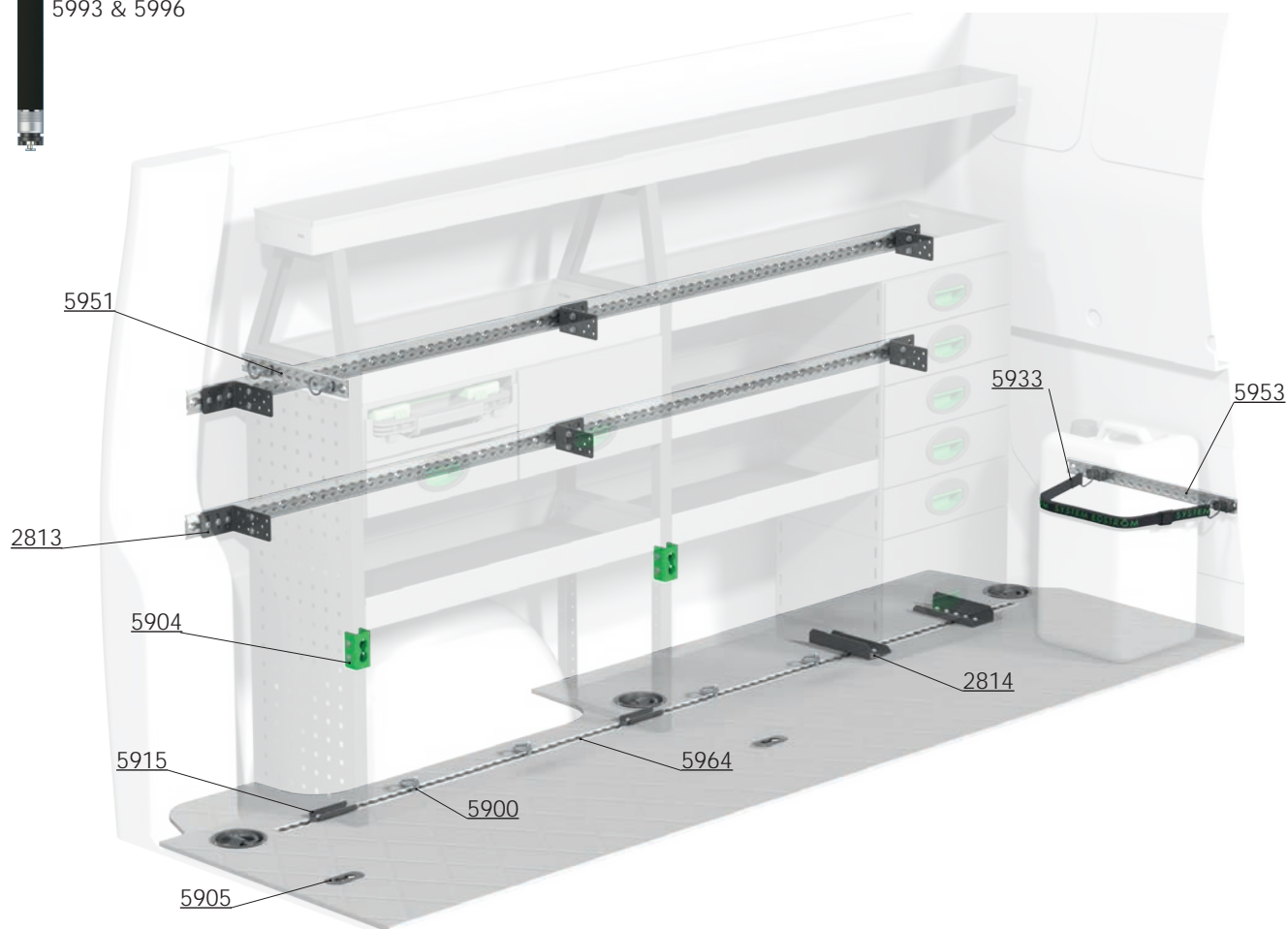
5940

### Airline straps

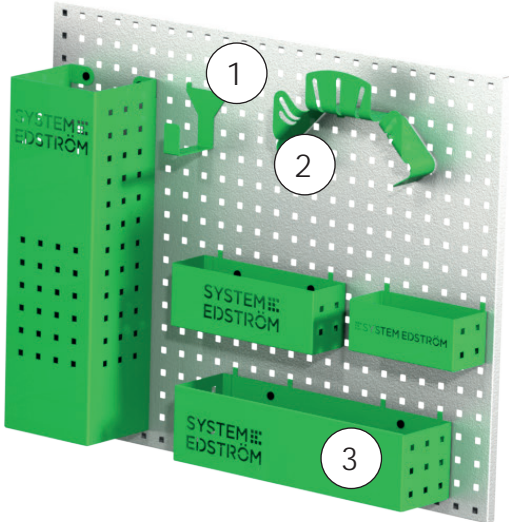
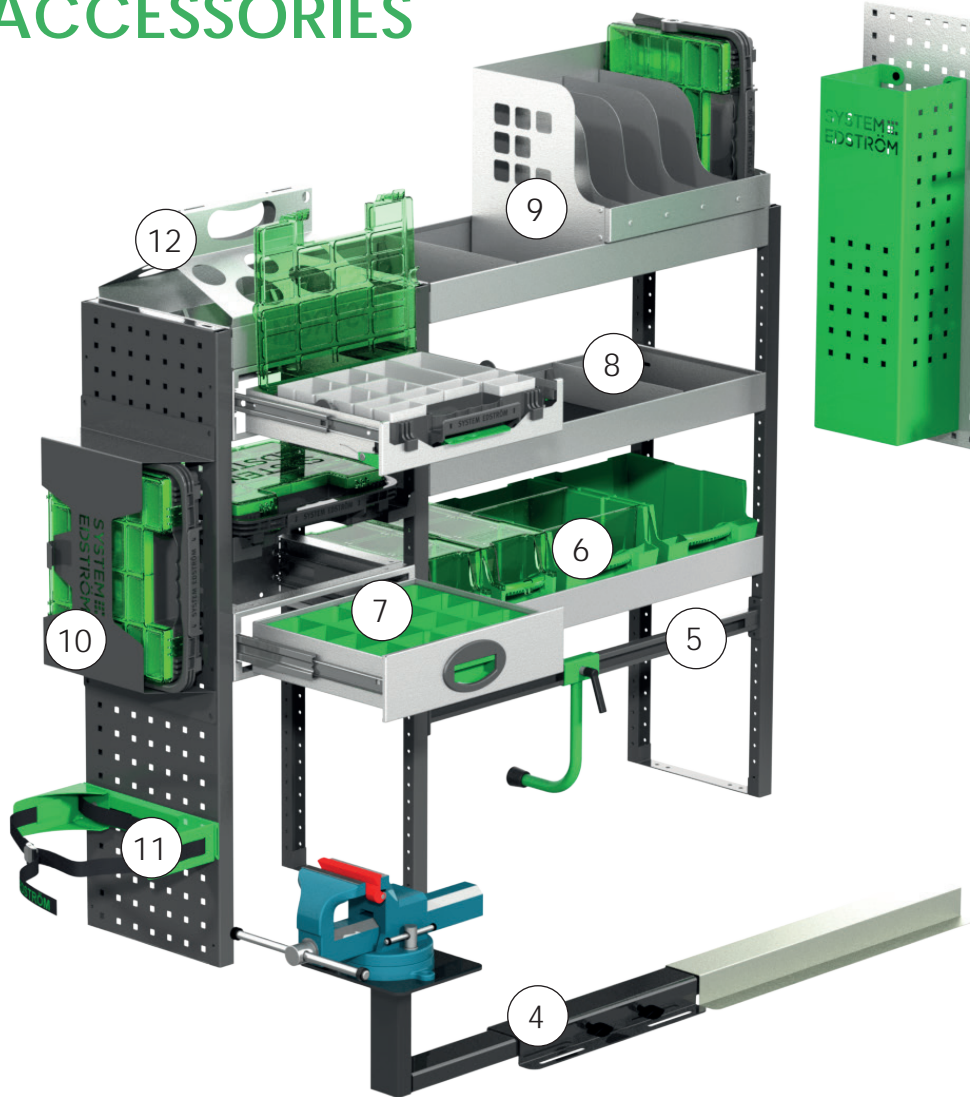
Information	Length	Kg	Part.No
Strap	200/ 700	0,1	5931
Strap	200/1200	0,1	5933
Strap	200/2200	0,2	5935
Strap with tensioner	500/2500	0,3	5940
Adjustable beam	1100-1550	2,6	5993
Adjustable beam	1500-2200	3,5	5996



5993 & 5996

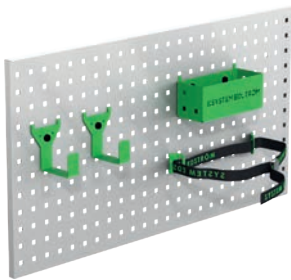


# ACCESSORIES



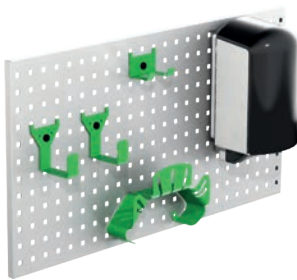
Pos.	Description
1	Universal hook
2	Cable/Hose rack
3	Pegboard basket
4	Vice and holders
5	Case support
6	Plastic bins
7	Drawer inserts
8	Shelf dividers
9	Tool case/File holder
10	Tool case
11	Gas bottle holders
12	Can/Tube holder

## Accessory package No. 1



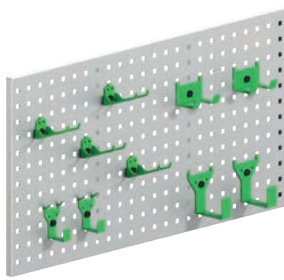
Art.No	
F11001	87,25
Pegboard not included.	

## Accessory package No. 2



Art.No	
F11002	175,30
Pegboard not included.	

## Accessory package No. 3



Art.No	
F11004	95,00
Pegboard not included.	

For more information:  
[www.systemedstrom.co.uk](http://www.systemedstrom.co.uk)



Up to 5 years  
warranty



Crash tested



Made in Sweden

**SYSTEM  
EDSTRÖM**

EDSTRÖM OF SWEDEN LTD.  
7, Cronin Road  
Weldon South Industrial Estate, Corby  
Northamptonshire NN18 8 AQ

CONTACT  
Telephone 01536 203040  
Email [info@edstrom.co.uk](mailto:info@edstrom.co.uk)  
Homepage [www.systemedstrom.co.uk](http://www.systemedstrom.co.uk)