

— CREATES MOBILE WORKPLACES —

MERCEDES

Citan, Vito & Sprinter



SYSTEM 
EDSTRÖM

MERCEDES CITAN L1

Suggested hours is the recommended mounting time for experienced retailers.

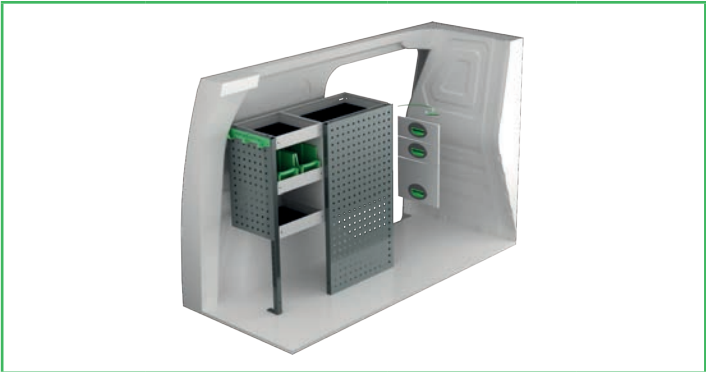
On electric and hybrid vans we recommend mounting by an experienced installer. Batteries and cable harnesses for approximately 400 volt must be taken in consideration. Cost of a floor may be added.



Art.No	LxDxH	Kg	Hr.
F42321	848x300x890 mm	17	2,9



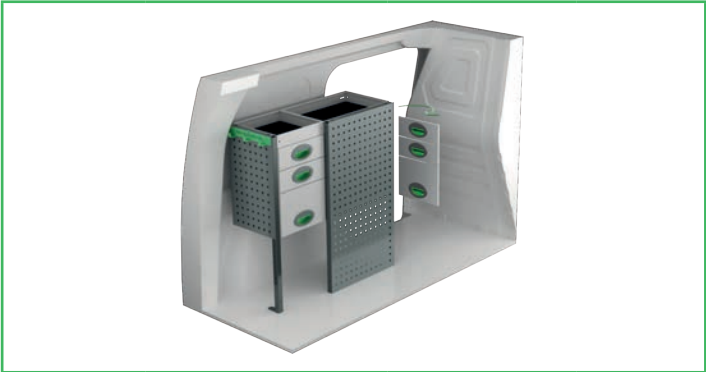
Art.No	LxDxH	Kg	Hr.
F42320	1239x300x890 mm	23	2,1



Art.No	LxDxH	Kg	Hr.
F42323	804x300x890 mm	31	3,2



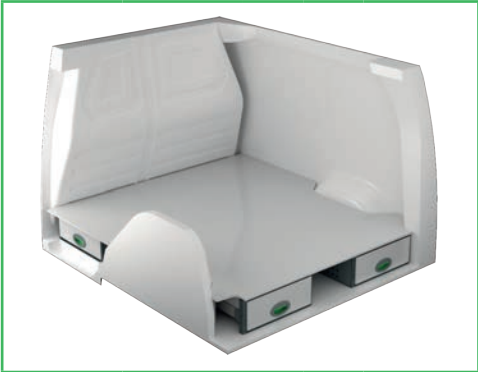
Art.No	LxDxH	Kg	Hr.
F42322	1239x300x890 mm	32	2,9



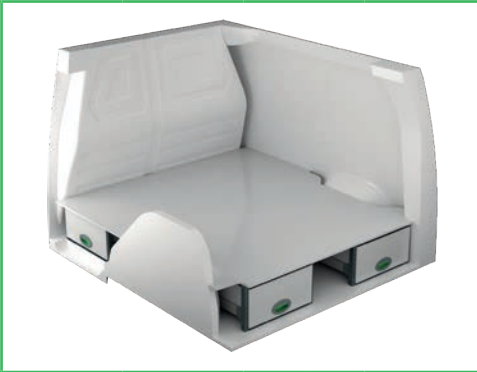
Art.No	LxDxH	Kg	Hr.
F42325	804x300x890 mm	40	3,3



Art.No	LxDxH	Kg	Hr.
F42324	1239x300x890 mm	43	3,7



Art.No	Height	Kg	Hr.
F42330	190	76	6,3



Art.No	Height	Kg	Hr.
F42331	250	75	6,1

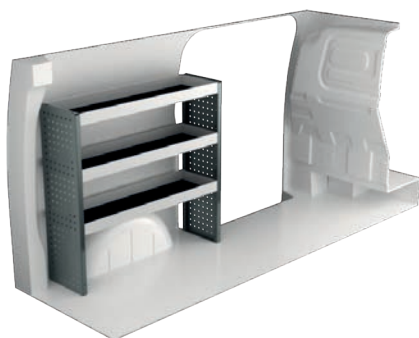


Art.No	Height	Kg	Hr.
F42332	360	90	6,3

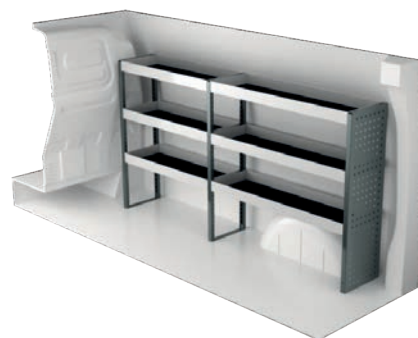
MERCEDES VITO COMPACT

Suggested hours is the recommended mounting time for experienced retailers.

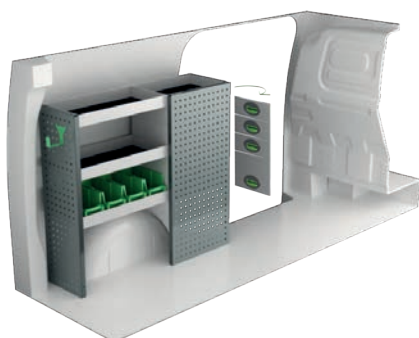
On electric and hybrid vans we recommend mounting by an experienced installer. Batteries and cable harnesses for approximately 400 volt must be taken in consideration. Cost of a floor may be added.



Art.No	LxDxH	Kg	Hr.
F41701	1061x300x1000 mm	21	2,2



Art.No	LxDxH	Kg	Hr.
F41700	1875x300x1000 mm	30	2,9



Art.No	LxDxH	Kg	Hr.
F41703	1107x300x1000 mm	41	3,1



Art.No	LxDxH	Kg	Hr.
F41702	1875x300x1000 mm	44	3,3



Art.No	LxDxH	Kg	Hr.
F41705	1061x300x1000 mm	33	2,4



Art.No	LxDxH	Kg	Hr.
F41704	1875x300x1000 mm	62	4,4



Art.No	Height	Kg	Hr.
F41710	190	107	7,5



Art.No	Height	Kg	Hr.
F41711	250	123	7,1

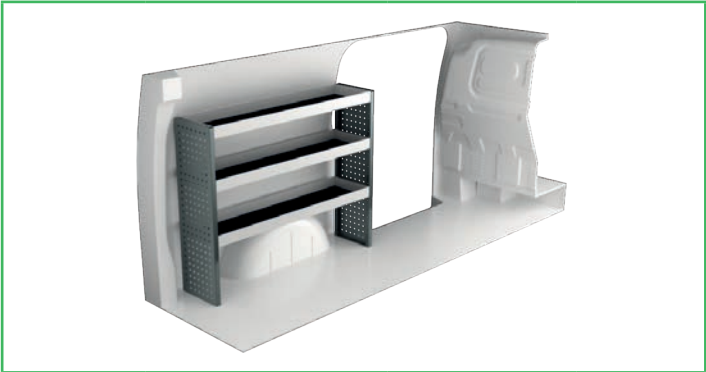


Art.No	Height	Kg	Hr.
F41712	360	121	7,5

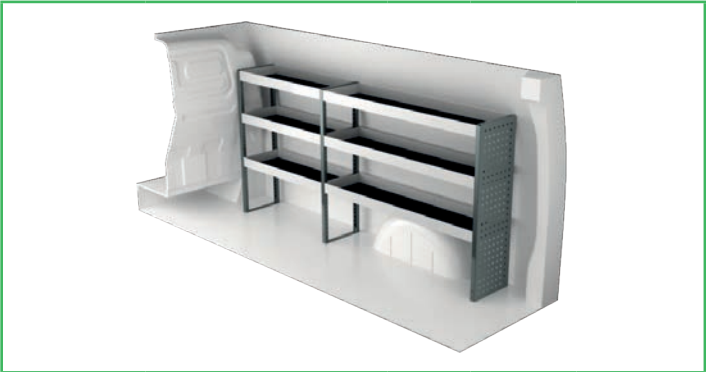
MERCEDES VITO LONG

Suggested hours is the recommended mounting time for experienced retailers.

On electric and hybrid vans we recommend mounting by an experienced installer. Batteries and cable harnesses for approximately 400 volt must be taken in consideration. Cost of a floor may be added.



Art.No	LxDxH	Kg	Hr.
F41721	1240x300x1000 mm	23	2,2



Art.No	LxDxH	Kg	Hr.
F41720	2054x300x1000 mm	32	2,9



Art.No	LxDxH	Kg	Hr.
F41723	1286x300x1000 mm	43	3,1



Art.No	LxDxH	Kg	Hr.
F41722	2145x300x1000 mm	51	3,3



Art.No	LxDxH	Kg	Hr.
F41725	1240x300x1000 mm	37	2,4



Art.No	LxDxH	Kg	Hr.
F41724	2054x300x1000 mm	59	4,3



Art.No	Height	Kg	Hr.
F41730	190	107	7,5



Art.No	Height	Kg	Hr.
F41731	250	125	7,8



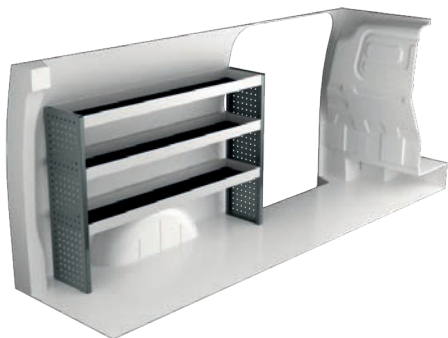
Art.No	Height	Kg	Hr.
F41732	360	139	7,8

3 712,20	3 730,80	4 242,45
----------	----------	----------

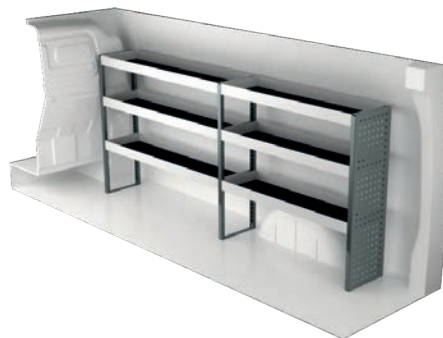
MERCEDES VITO EXTRALONG

Suggested hours is the recommended mounting time for experienced retailers.

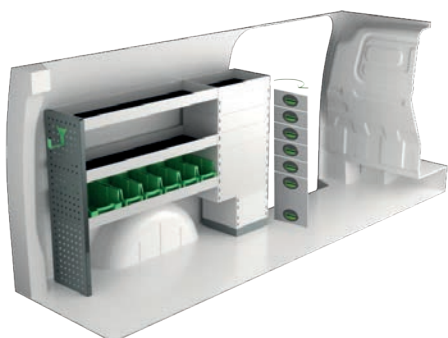
On electric and hybrid vans we recommend mounting by an experienced installer. Batteries and cable harnesses for approximately 400 volt must be taken in consideration. Cost of a floor may be added.



Art.No	LxDxH	Kg	Hr.
F41741	1453x300x1000 mm	26	2,2



Art.No	LxDxH	Kg	Hr.
F41740	2267x300x1000 mm	36	2,9



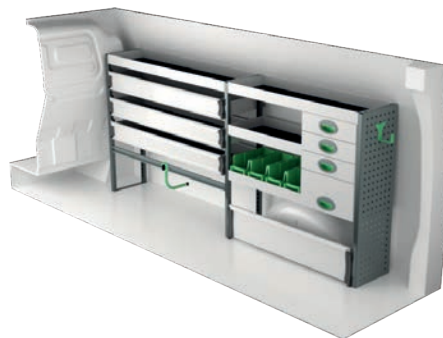
Art.No	LxDxH	Kg	Hr.
F41743	1499x300x1000 mm	56	3,1



Art.No	LxDxH	Kg	Hr.
F41742	2267x300x1000 mm	49	3,3



Art.No	LxDxH	Kg	Hr.
F41745	1240x470x1000 mm	48	2,4



Art.No	LxDxH	Kg	Hr.
F41744	2267x300x1000 mm	66	4,4



Art.No	Height	Kg	Hr.
F41750	190	111	7,5



Art.No	Height	Kg	Hr.
F41751	250	127	7,8

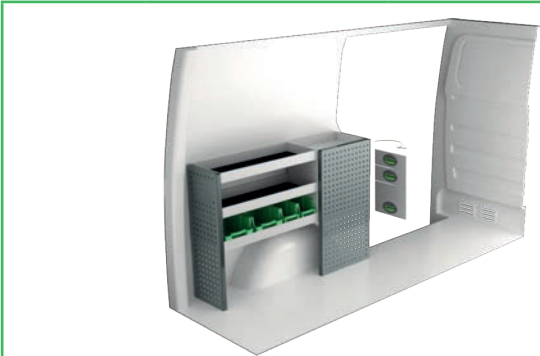


Art.No	Height	Kg	Hr.
F41752	360	141	7,8

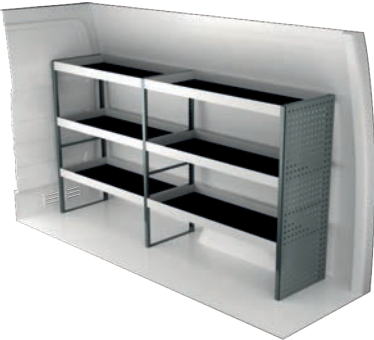
MERCEDES SPRINTER 3250 mm wheel base

Suggested hours is the recommended mounting time for experienced retailers.

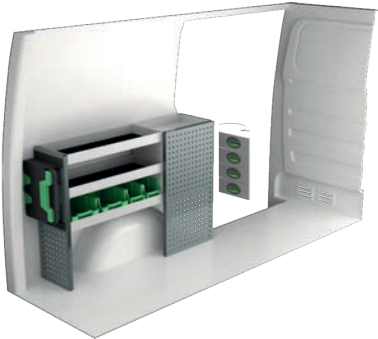
On electric and hybrid vans we recommend mounting by an experienced installer. Batteries and cable harnesses for approximately 400 volt must be taken in consideration. Cost of a floor may be added.



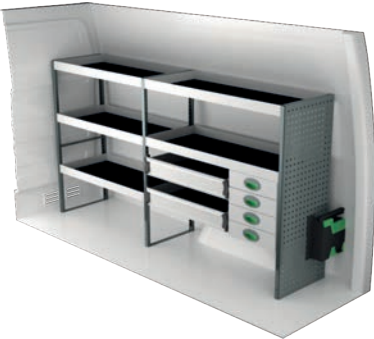
Art.No	LxDxH	Kg	Hr.
F44081	1287x300x890 mm	37	2,9



Art.No	LxDxH	Kg	Hr.
F44080	2270x470x1220 mm	53	2,5



Art.No	LxDxH	Kg	Hr.
F44083	1372x300x890 mm	43	3,2



Art.No	LxDxH	Kg	Hr.
F44082	2270x470x1220 mm	83	3,9



Art.No	LxDxH	Kg	Hr.
F44085	1287x300x890 mm	51	3,5



Art.No	LxDxH	Kg	Hr.
F44084	2270x300x1515 mm	89	5,2



Art.No	LxDxH	Kg	Hr.
F44087	1242x470x1220 mm	61	2,8



Art.No	LxDxH	Kg	Hr.
F44086	2270x300x1220 mm	88	5,0

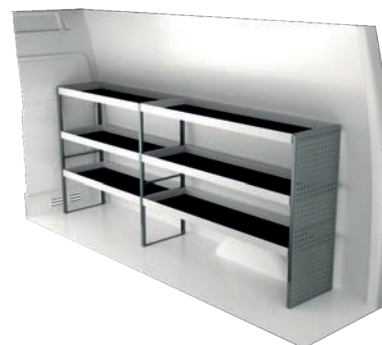
MERCEDES SPRINTER 3665 mm wheel base

Suggested hours is the recommended mounting time for experienced retailers.

On electric and hybrid vans we recommend mounting by an experienced installer. Batteries and cable harnesses for approximately 400 volt must be taken in consideration. Cost of a floor may be added.



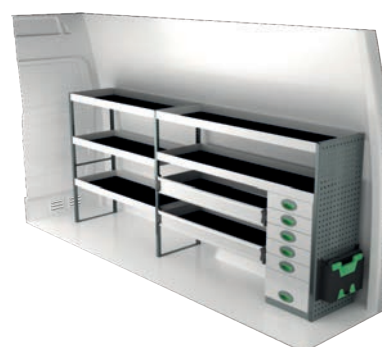
Art.No	LxDxH	Kg	Hr.
F44041	1679x300x890 mm	52	2,6



Art.No	LxDxH	Kg	Hr.
F44040	2841x470x1220 mm	63	2,5



Art.No	LxDxH	Kg	Hr.
F44043	1711x300x1220 mm	70	3,6



Art.No	LxDxH	Kg	Hr.
F44042	2841x470x1220 mm	108	4,1



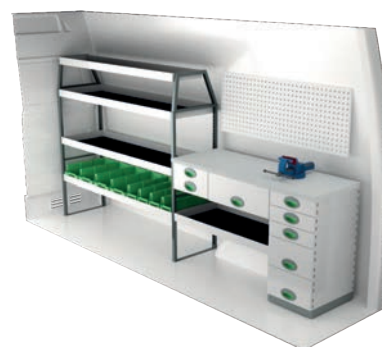
Art.No	LxDxH	Kg	Hr.
F44045	1778x470x855 mm	143	4,1



Art.No	LxDxH	Kg	Hr.
F44044	2841x300x1735 mm	118	5,9



Art.No	LxDxH	Kg	Hr.
F44047	1242x470x1220 mm	61	2,8

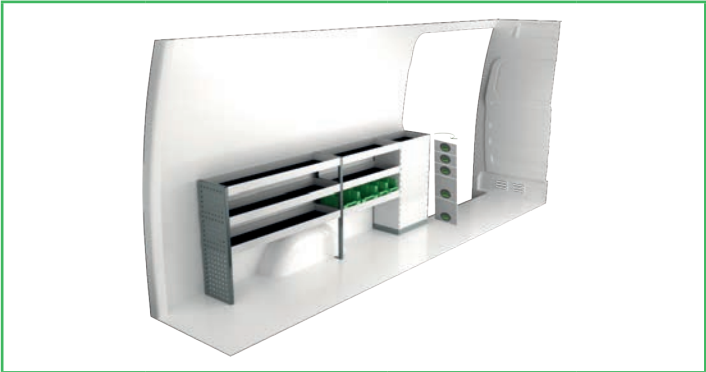


Art.No	LxDxH	Kg	Hr.
F44046	3021x470x1510 mm	137	4,6

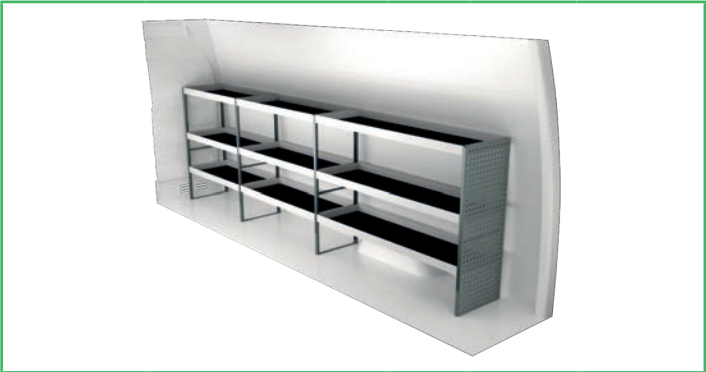
MERCEDES SPRINTER 4325 mm wheel base

Suggested hours is the recommended mounting time for experienced retailers.

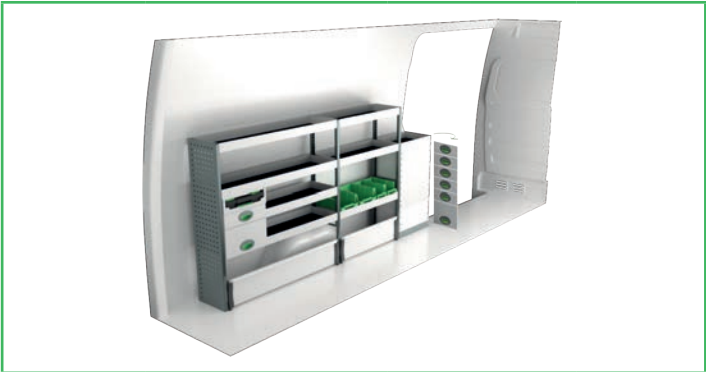
On electric and hybrid vans we recommend mounting by an experienced installer. Batteries and cable harnesses for approximately 400 volt must be taken in consideration. Cost of a floor may be added.



Art.No	LxDxH	Kg	Hr.
F45001	2499x300x890 mm	61	3,5



Art.No	LxDxH	Kg	Hr.
F45000	3878x470x1220 mm	83	3,4



Art.No	LxDxH	Kg	Hr.
F45003	2501x300x1220 mm	87	5,1



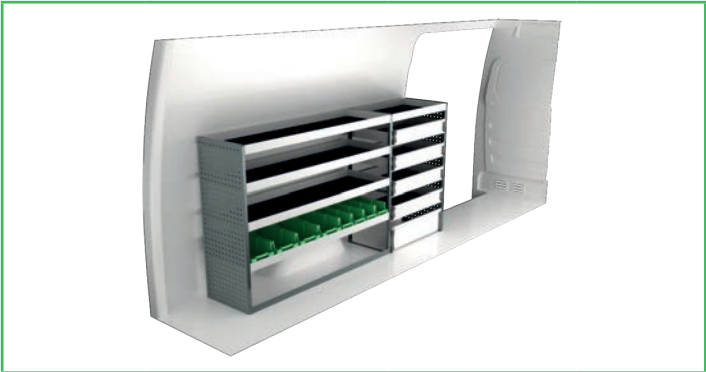
Art.No	LxDxH	Kg	Hr.
F45002	3878x470x1220 mm	139	5,5



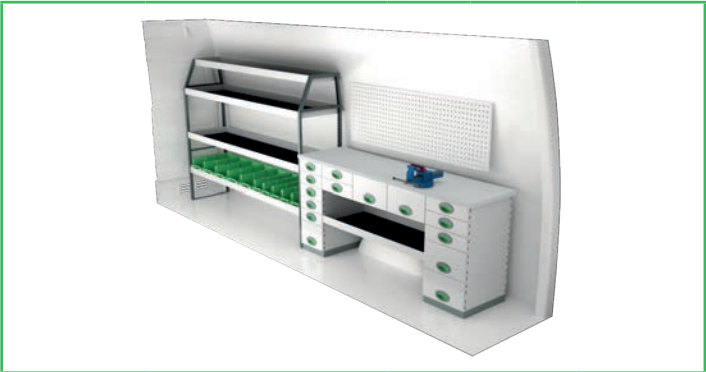
Art.No	LxDxH	Kg	Hr.
F45005	2430x470x855 mm	193	5,3



Art.No	LxDxH	Kg	Hr.
F45004	3878x300x1735 mm	164	7,7



Art.No	LxDxH	Kg	Hr.
F45007	2450x470x1220 mm	93	4,3



Art.No	LxDxH	Kg	Hr.
F45006	3894x470x1510 mm	201	5,5

INFORMATION



GENERALLY

The kits include what you see in the drawing as well as installation parts, rubber mats to all shelves and foam to the drawers.

System Edström Bilinredningar AB is certified according to SS-EN ISO 9001:2015 to secure the administrative quality and to give us the possibility to keep a high accuracy on deliveries.

All material used in System Edström can be recycled to 100%. We are also certified according to SS-EN ISO 14001:2015.



REMEMBER

Now that you have chosen to have System Edström in your vehicle you have taken the first and most important step to make your mobile workshop safe and functional. From here on it is up to you how safe and functional your working place will be.

Remember;

You as the driver has the full responsibility if you or any one else is injured if the cargo is poorly secured. It is also your responsibility to make sure that the interior is mounted in the safest way possible whatever your choice of workshop, even if they are professionals with knowhow and long experience.

Make sure NOT to exceed the maximum payload of the vehicle.



SECURITY

Our products are tested in two ways, the first and most important is two crashtests, one (ECE 17:07) performed by Milbrook in England and another one performed by Valutec in France (INRS NS286). Learn more about us on our homepage, www.systemedstrom.com.





Vice

Depth	Width	Height	Kg	Part.No
360	135	140	10,3	5004

The forged vice is complete with pipe jaw and turning plate.
Max opening 140 mm.



Vice Holders

Depth	Width	Height	Kg	Part.No
1110	210	195	9,4	5012
1110	210	80	8,9	5013

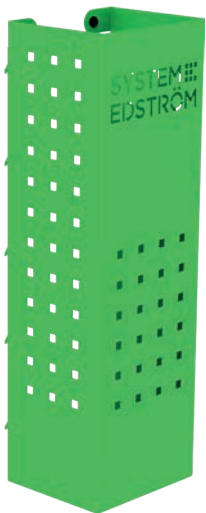
Plate measurement 180x210 mm. Cover 2950 is included.



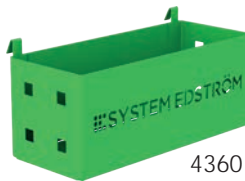
Gas bottle holder adjustable

Depth	Width	Height	Tube Ø	Kg	Part.No
150	300	97	< 300	0,9	2910

Liquefied petroleum gas P6 (bottles with 320 mm Ø can be stored after modification).



4370



4360



4362

Pegboard tray

Depth	Width	Height	Kg	Part.No
82	200	80	0,5	4360
82	285	102	0,8	4362
122	455	122	1,5	4364
153	179	575	3,0	4370

A number of different trays that solve (almost) all storage problems.



4364



Internal ladder holder

Length	Kg	Part.No
2400	5,5	T8900

Store your ladder on the inside of the roof, pull it back to the rear door in a simple operation. The aluminum rail comes in two parts with a joining piece.





Hose/Cable rack

Depth	Width	Height	Kg	Part.No
79	267	168	0,5	4077

Tube holder

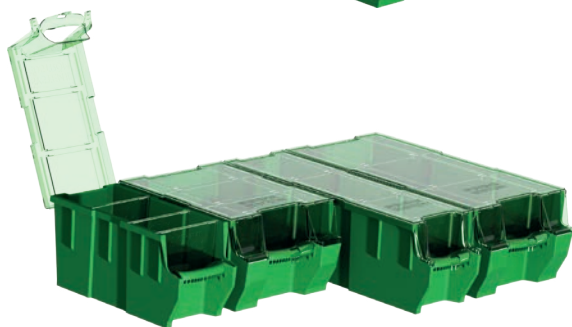
66	194	123	0,4	4349
----	-----	-----	-----	------



Universal hook

Depth	Width	Height	Kg	Part.No
85	80	100	0,2	4356
61	83	55	0,1	4357

Simplicity at its best, heavy duty hooks, to be mount on a pegboard or hang it on the edge of a shelf.



Plastic bin for shelves

Depth	Width	Height	Kg	Part.No
300	145	154	0,4	3050
300	235	154	0,5	3052
470	145	154	0,5	3055
470	235	154	0,5	3057

Transparent lid for plastic bins

Depth	Width	Fits	Kg	Part.No
300	150	3050	0,2	3060
300	240	3052	0,2	3062
470	150	3055	0,2	3065
470	240	3057	0,4	3067

Dividers for plastic bins

Width	Height	Fits	Part.No
140	154	3050, 55	3070
230	154	3052, 57	3072

Bracket for dropfront shelves

Depth	Kg	Part.No
300	0,1	3081
470	0,2	3082



Clothes hook

Depth	Width	Height	Kg	Part.No
31	295	40	0,3	2706
31	465	40	0,5	2708

We call it a clothes hook but, needless to say, you can use it to hang up whatever you want on it.

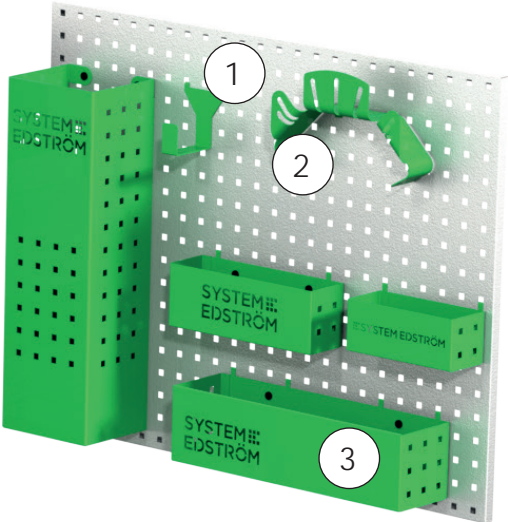
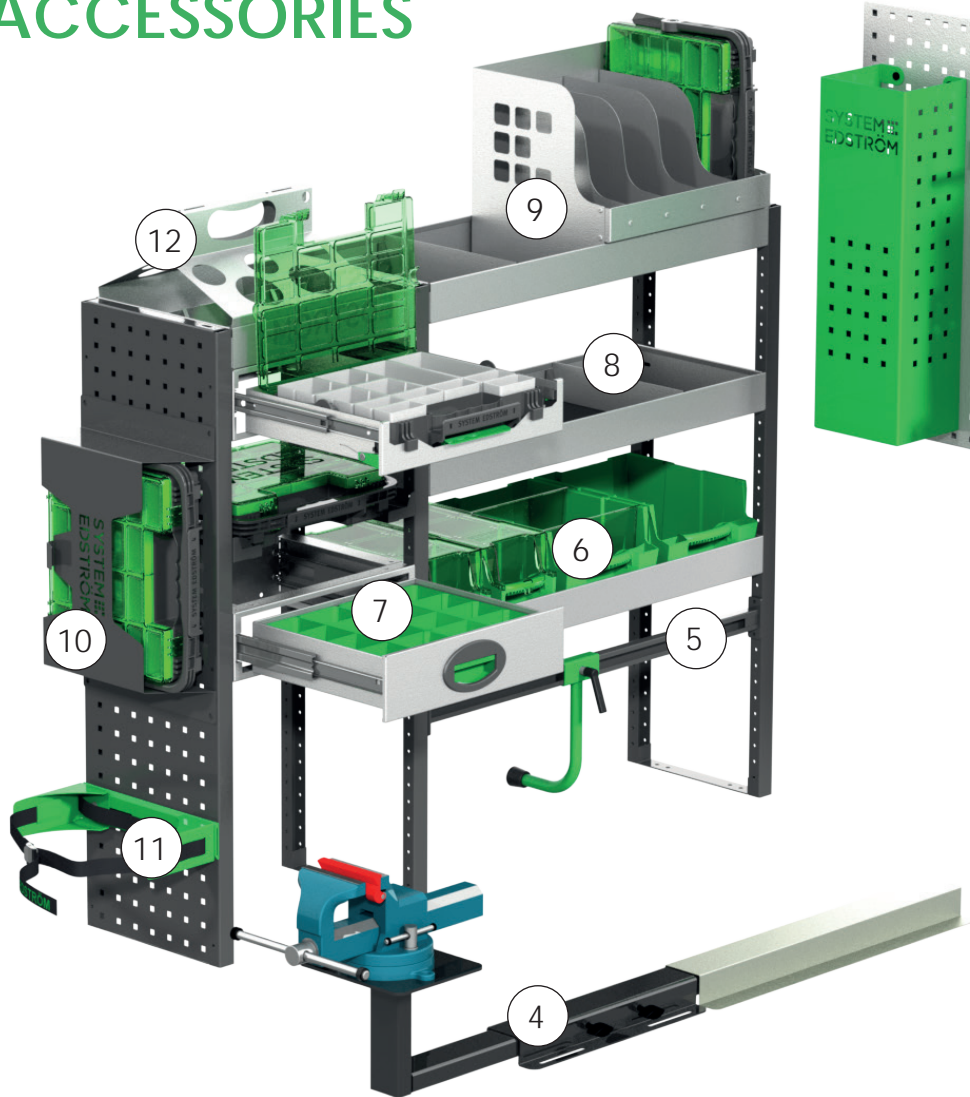


Strap with brackets

Information	Width	Part.No
1200 mm, nylon strap	25	4365
1000 mm, elastic strap	25	4366

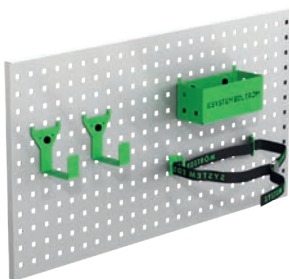
The brackets will fit on our pegboards.

ACCESSORIES



Pos.	Description
1	Universal hook
2	Cable/Hose rack
3	Pegboard basket
4	Vice and holders
5	Case support
6	Plastic bins
7	Drawer inserts
8	Shelf dividers
9	Tool case/File holder
10	Tool case
11	Gas bottle holders
12	Can/Tube holder

Accessory package No. 1

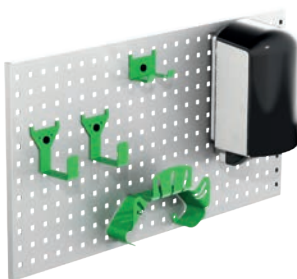


Art.No

F11001

Pegboard not included.

Accessory package No. 2

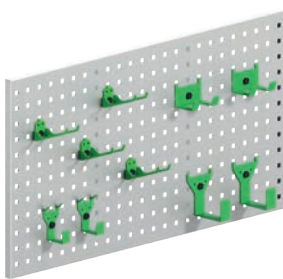


Art.No

F11002

Pegboard not included.

Accessory package No. 3



Art.No

F11004

Pegboard not included.

For more information:

www.systemedstrom.co.uk



Up to 5 years
warranty



Crash tested



Made in Sweden

**SYSTEM
EDSTRÖM**

EDSTRÖM OF SWEDEN LTD.
7, Cronin Road
Weldon South Industrial Estate, Corby
Northamptonshire NN18 8 AQ

CONTACT
Telephone 01536 203040
Email info@edstrom.co.uk
Homepage www.systemedstrom.co.uk