

— CREATES MOBILE WORKPLACES —

# FORD

Courier, Connect, Custom, Transit & Ranger

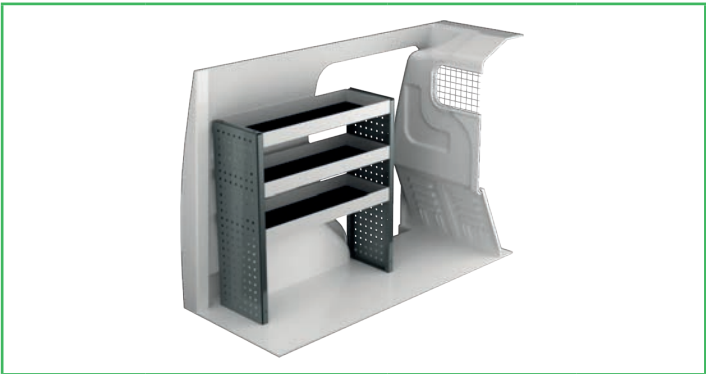


**SYSTEM**   
**EDSTRÖM**

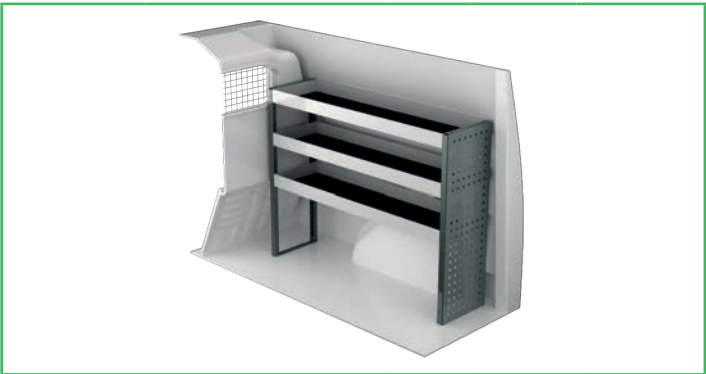
# FORD TRANSIT COURIER

Suggested hours is the recommended mounting time for experienced retailers.

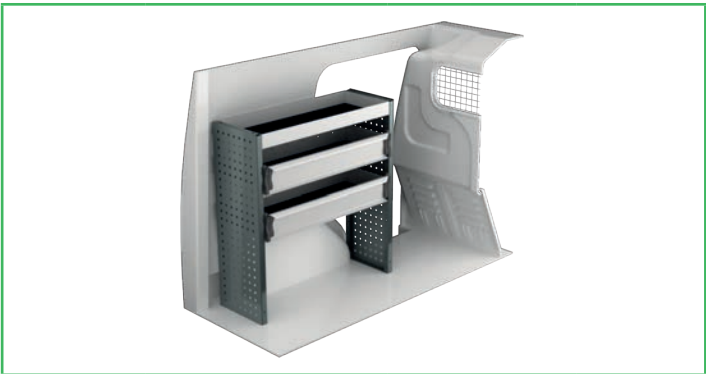
On electric and hybrid vans we recommend mounting by an experienced installer. Batteries and cable harnesses for approximately 400 volt must be taken in consideration. Cost of a floor may be added.



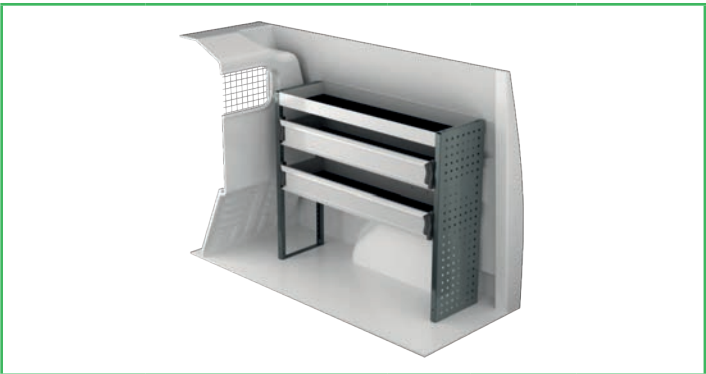
Art.No	LxDxH	Kg	Hr.
F41301	850x300x890 mm	16	2,1



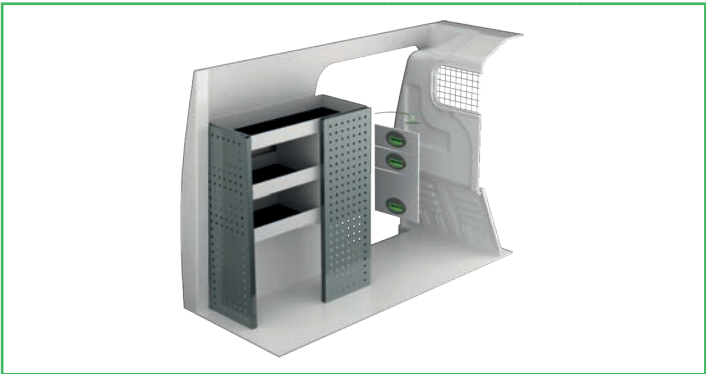
Art.No	LxDxH	Kg	Hr.
F41300	1062x300x890 mm	20	2,1



Art.No	LxDxH	Kg	Hr.
F41303	850x300x890 mm	20	2,3



Art.No	LxDxH	Kg	Hr.
F41302	1062x300x890 mm	23	2,3



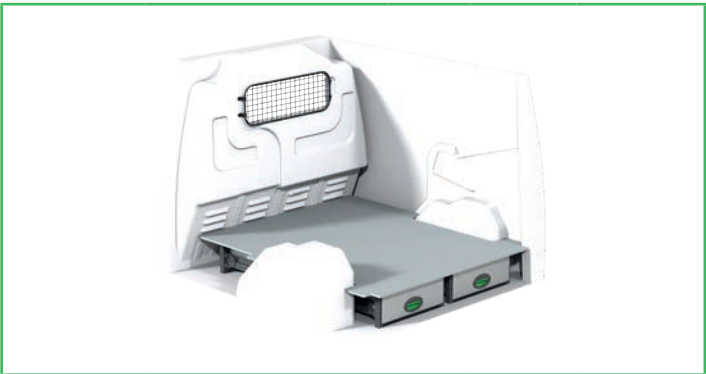
Art.No	LxDxH	Kg	Hr.
F41305	727x300x890 mm	27	2,6



Art.No	LxDxH	Kg	Hr.
F41304	1062x300x890 mm	28	2,8



Art.No	Height	Kg	Hr.
F41316	190	75	6,5



Art.No	Height	Kg	Hr.
F41315	190	51	5,0



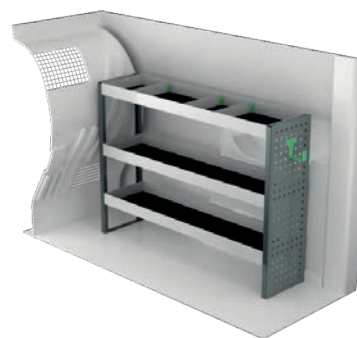
# FORD TRANSIT CONNECT L1

Suggested hours is the recommended mounting time for experienced retailers.

On electric and hybrid vans we recommend mounting by an experienced installer. Batteries and cable harnesses for approximately 400 volt must be taken in consideration. Cost of a floor may be added.



Art.No	LxDxH	Kg	Hr.
F41101	850x300x890 mm	24	2,5



Art.No	LxDxH	Kg	Hr.
F41100	1241x300x890 mm	22	2,2



Art.No	LxDxH	Kg	Hr.
F41103	725x300x890 mm	38	3,3



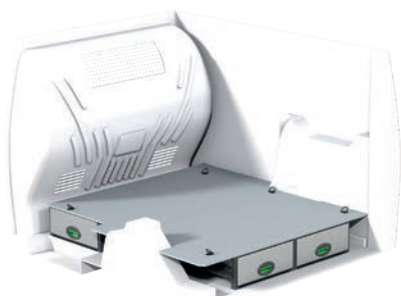
Art.No	LxDxH	Kg	Hr.
F41102	1241x300x890 mm	37	3,3



Art.No	LxDxH	Kg	Hr.
F41107	770x300x890 mm	51	2,9



Art.No	LxDxH	Kg	Hr.
F41108	1241x300x890 mm	35	2,6



Art.No	Height	Kg	Hr.
F41110	190	60	6,1



Art.No	Height	Kg	Hr.
F41113	250	71	6,1

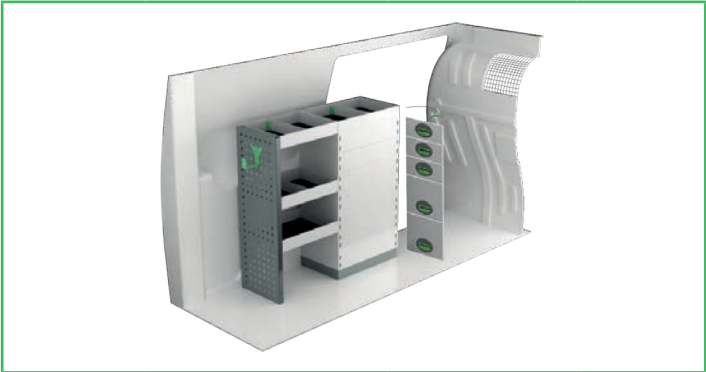


Art.No	Height	Kg	Hr.
F41114	360	78	6,1

# FORD TRANSIT CONNECT L2

Suggested hours is the recommended mounting time for experienced retailers.

On electric and hybrid vans we recommend mounting by an experienced installer. Batteries and cable harnesses for approximately 400 volt must be taken in consideration. Cost of a floor may be added.



Art.No	LxDxH	Kg	Hr.
F41131	895x300x890 mm	41	3,3



Art.No	LxDxH	Kg	Hr.
F41130	1665x300x890 mm	26	2,6



Art.No	LxDxH	Kg	Hr.
F41135	1063x300x890 mm	29	2,6



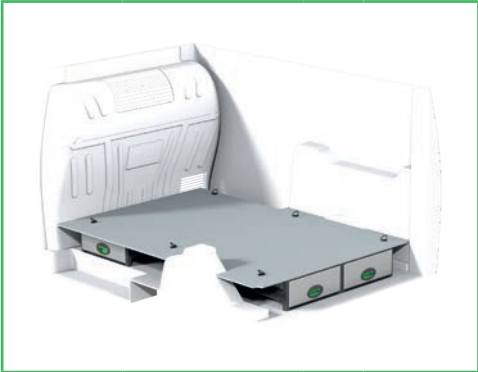
Art.No	LxDxH	Kg	Hr.
F41132	1620x300x890 mm	57	3,5



Art.No	LxDxH	Kg	Hr.
F41137	940x300x890 mm	64	2,9



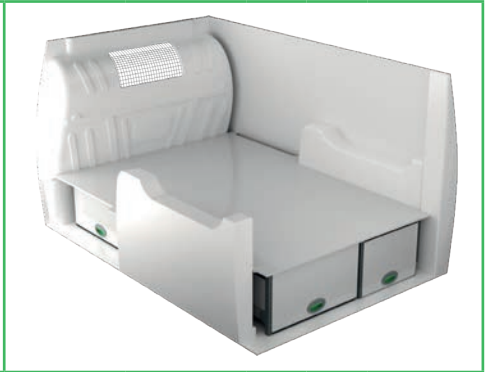
Art.No	LxDxH	Kg	Hr.
F41134	1633x300x890 mm	51	3,7



Art.No	Height	Kg	Hr.
F41140	190	67	6,1



Art.No	Height	Kg	Hr.
F41143	150	92	6,1

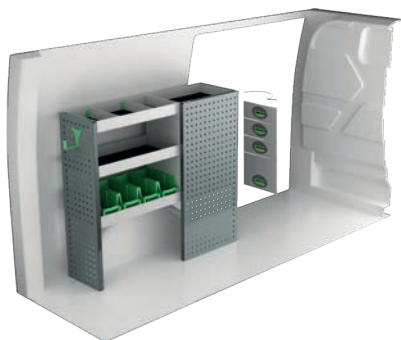


Art.No	Height	Kg	Hr.
F41144	360	98	6,1

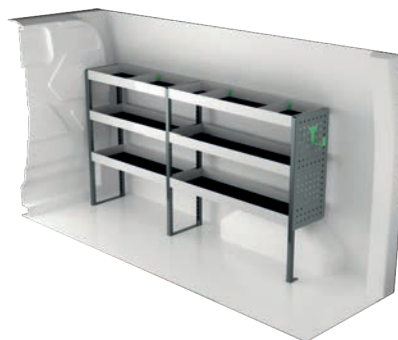
# FORD TRANSIT CUSTOM 2933 mm wheel base

Suggested hours is the recommended mounting time for experienced retailers.

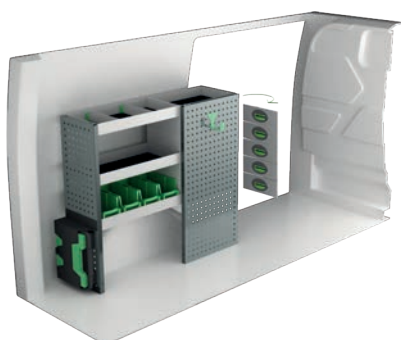
On electric and hybrid vans we recommend mounting by an experienced installer. Batteries and cable harnesses for approximately 400 volt must be taken in consideration. Cost of a floor may be added.



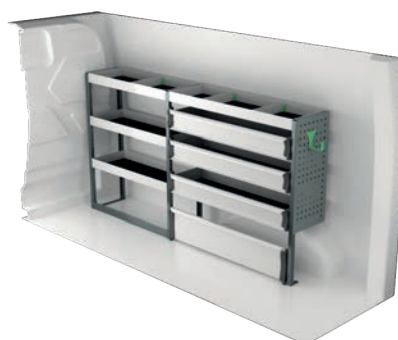
Art.No	LxDxH	Kg	Hr.
F40701	1108x300x1000 mm	41	2,6



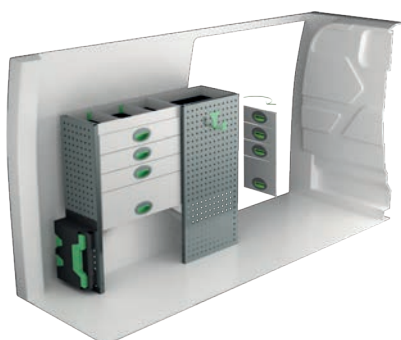
Art.No	LxDxH	Kg	Hr.
F40700	1878x300x1000 mm	31	3,0



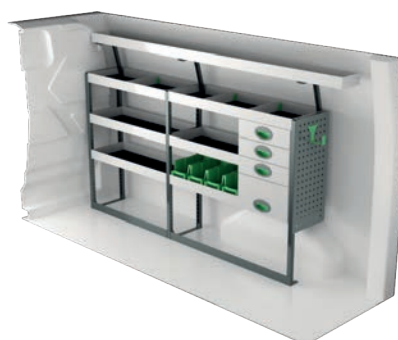
Art.No	LxDxH	Kg	Hr.
F40703	1197x300x1000 mm	47	3,0



Art.No	LxDxH	Kg	Hr.
F40702	1878x300x1000 mm	43	3,7



Art.No	LxDxH	Kg	Hr.
F40705	1197x300x1000 mm	60	3,4



Art.No	LxDxH	Kg	Hr.
F40704	1878x300x1000 mm	55	4,1



Art.No	Height	Kg	Hr.
F40712	190	108	7,5



Art.No	Height	Kg	Hr.
F40713	250	113	6,9



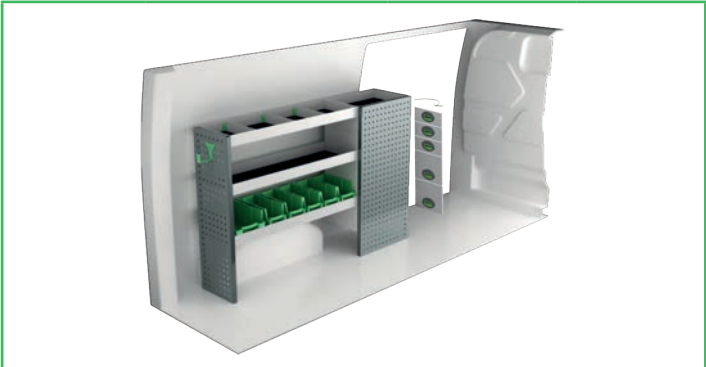
Art.No	Height	Kg	Hr.
F40714	360	125	6,9



# FORD TRANSIT CUSTOM 3300 mm wheel base

Suggested hours is the recommended mounting time for experienced retailers.

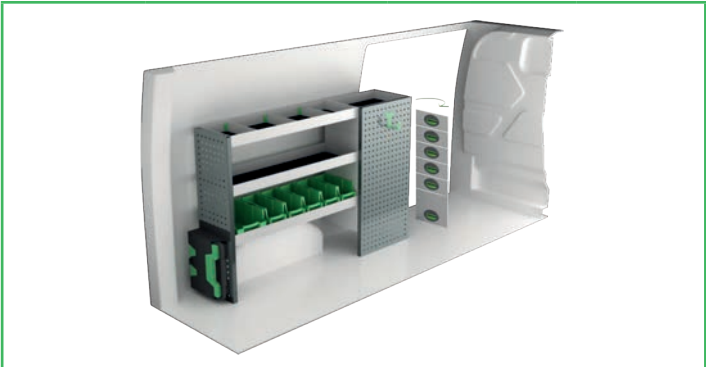
On electric and hybrid vans we recommend mounting by an experienced installer. Batteries and cable harnesses for approximately 400 volt must be taken in consideration. Cost of a floor may be added.



Art.No	LxDxH	Kg	Hr.
F40721	1500x300x1000 mm	54	2,8



Art.No	LxDxH	Kg	Hr.
F40720	2270x300x1000 mm	37	3,0



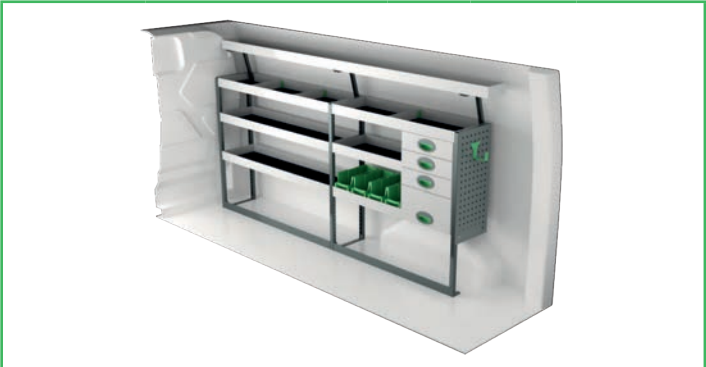
Art.No	LxDxH	Kg	Hr.
F40723	1589x300x1000 mm	60	3,1



Art.No	LxDxH	Kg	Hr.
F40722	2270x300x1000 mm	50	3,7



Art.No	LxDxH	Kg	Hr.
F40725	1500x300x1000 mm	70	3,7



Art.No	LxDxH	Kg	Hr.
F40724	2270x300x1000 mm	67	4,1



Art.No	Height	Kg	Hr.
F40732	190	109	7,5



Art.No	Height	Kg	Hr.
F40733	250	115	6,9

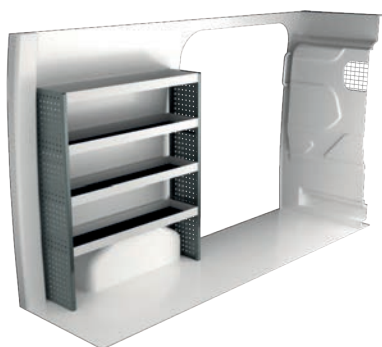


Art.No	Height	Kg	Hr.
F40734	360	127	6,9

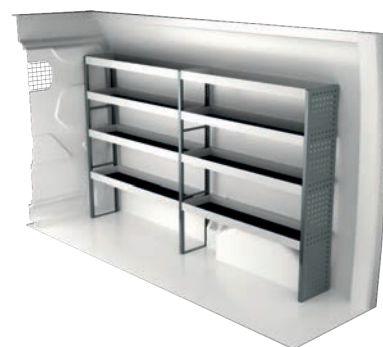
# FORD TRANSIT L2H2

Suggested hours is the recommended mounting time for experienced retailers.

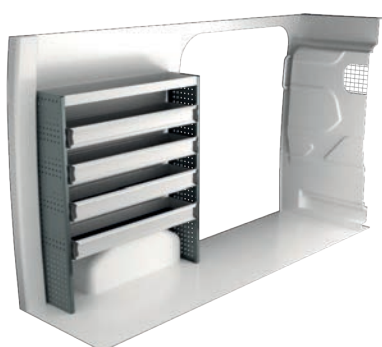
On electric and hybrid vans we recommend mounting by an experienced installer. Batteries and cable harnesses for approximately 400 volt must be taken in consideration. Cost of a floor may be added.



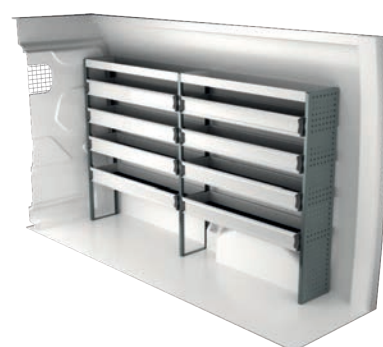
Art.No	LxDxH	Kg	Hr.
F41331	1240x300x1440 mm	32	2,2



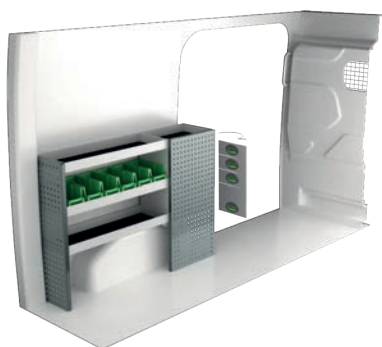
Art.No	LxDxH	Kg	Hr.
F41330	2448x300x1440 mm	52	2,8



Art.No	LxDxH	Kg	Hr.
F41333	1240x300x1440 mm	44	2,9



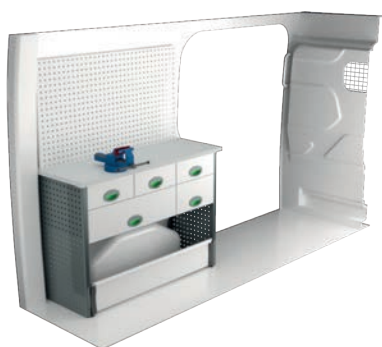
Art.No	LxDxH	Kg	Hr.
F41332	2448x300x1440 mm	76	4,3



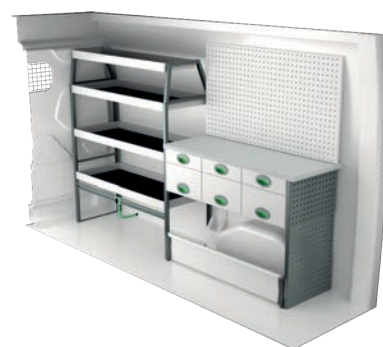
Art.No	LxDxH	Kg	Hr.
F41335	1409x300x1000 mm	47	3,4



Art.No	LxDxH	Kg	Hr.
F41334	2448x470x1565 mm	80	4,2



Art.No	LxDxH	Kg	Hr.
F41337	1240x470x920 mm	82	3,7



Art.No	LxDxH	Kg	Hr.
F41336	2448x470x1510 mm	103	4,5

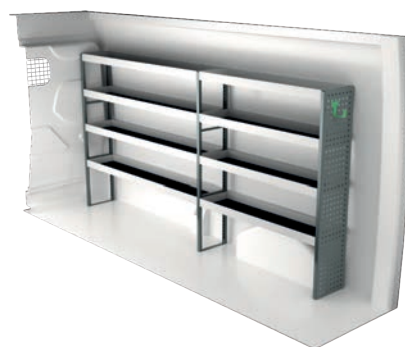
# FORD TRANSIT L3H2

Suggested hours is the recommended mounting time for experienced retailers.

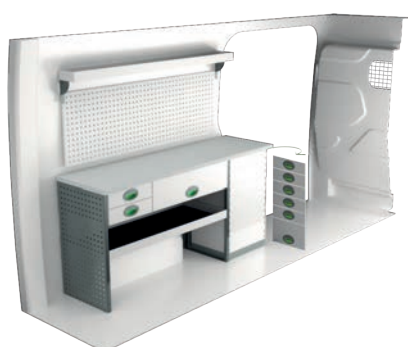
On electric and hybrid vans we recommend mounting by an experienced installer. Batteries and cable harnesses for approximately 400 volt must be taken in consideration. Cost of a floor may be added.



Art.No	LxDxH	Kg	Hr.
F41351	1240x470x1000 mm	58	2,8



Art.No	LxDxH	Kg	Hr.
F41350	2840x300x1440 mm	58	3,1



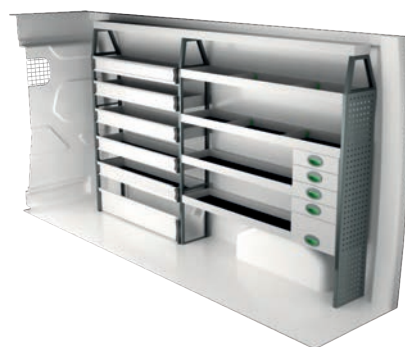
Art.No	LxDxH	Kg	Hr.
F41353	1710x470x855 mm	102	4,2



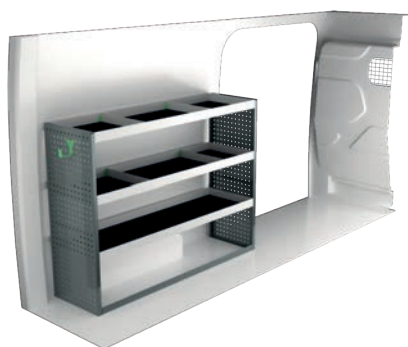
Art.No	LxDxH	Kg	Hr.
F41352	2840x300x1440 mm	82	4,4



Art.No	LxDxH	Kg	Hr.
F41355	1632x300x1440 mm	58	3,9



Art.No	LxDxH	Kg	Hr.
F41354	2840x300x1670 mm	106	5,0



Art.No	LxDxH	Kg	Hr.
F41357	1632x470x1220 mm	45	2,2



Art.No	LxDxH	Kg	Hr.
F41356	3053x300x1220 mm	115	5,6



# FORD RANGER

Suggested hours is the recommended mounting time for experienced retailers.

On electric and hybrid vans we recommend mounting by an experienced installer. Batteries and cable harnesses for approximately 400 volt must be taken in consideration. Cost of a floor may be added.



Art.No	Height	Kg	Hr.
F45100	214 mm	59	5,7



Art.No	Height	Kg	Hr.
F45101	220 mm	52	2,5

## INFORMATION



### GENERALLY

The kits include what you see in the drawing as well as installation parts, rubber mats to all shelves and foam to the drawers. System Edström Bilinredningar AB is certified according to SS-EN ISO 9001:2015 to secure the administrative quality and to give us the possibility to keep a high accuracy on deliveries.

All material used in System Edström can be recycled to 100%. We are also certified according to SS-EN ISO 14001:2015.



### REMEMBER

Now that you have chosen to have System Edström in your vehicle you have taken the first and most important step to make your mobile workshop safe and functional. From here on it is up to you how safe and functional your working place will be.

Remember;  
You as the driver has the full responsibility if you or any one else is injured if the cargo is poorly secured. It is also your responsibility to make sure that the interior is mounted in the safest way possible whatever your choice of workshop, even if they are professionals with knowhow and long experience.

Make sure NOT to exceed the maximum payload of the vehicle.



### SECURITY

Our products are tested in two ways, the first and most important is two crashtests, one (ECE 17:07) performed by Milbrook in England and another one performed by Valutec in France (INRS NS286). Learn more about us on our homepage, [www.systemedstrom.com](http://www.systemedstrom.com).





### Vice

Depth	Width	Height	Kg	Part.No
360	135	140	10,3	5004

The forged vice is complete with pipe jaw and turning plate.  
Max opening 140 mm.



### Vice Holders

Depth	Width	Height	Kg	Part.No
1110	210	195	9,4	5012
1110	210	80	8,9	5013

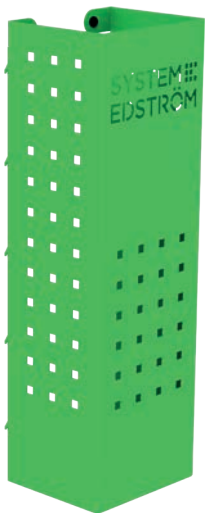
Plate measurement 180x210 mm. Cover 2950 is included.



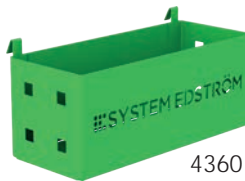
### Gas bottle holder adjustable

Depth	Width	Height	Tube Ø	Kg	Part.No
150	300	97	< 300	0,9	2910

Liquefied petroleum gas P6 (bottles with 320 mm Ø can be stored after modification).



4370



4360



4362

### Pegboard tray

Depth	Width	Height	Kg	Part.No
82	200	80	0,5	4360
82	285	102	0,8	4362
122	455	122	1,5	4364
153	179	575	3,0	4370

A number of different trays that solve (almost) all storage problems.



4364



### Internal ladder holder

Length	Kg	Part.No
2400	5,5	T8900

Store your ladder on the inside of the roof, pull it back to the rear door in a simple operation. The aluminum rail comes in two parts with a joining piece.





### Hose/Cable rack

Depth	Width	Height	Kg	Part.No
79	267	168	0,5	4077

### Tube holder

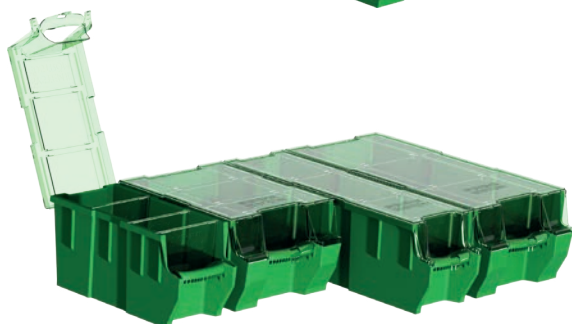
66	194	123	0,4	4349
----	-----	-----	-----	------



### Universal hook

Depth	Width	Height	Kg	Part.No
85	80	100	0,2	4356
61	83	55	0,1	4357

Simplicity at its best, heavy duty hooks, to be mount on a pegboard or hang it on the edge of a shelf.



### Plastic bin for shelves

Depth	Width	Height	Kg	Part.No
300	145	154	0,4	3050
300	235	154	0,5	3052
470	145	154	0,5	3055
470	235	154	0,5	3057

### Transparent lid for plastic bins

Depth	Width	Fits	Kg	Part.No
300	150	3050	0,2	3060
300	240	3052	0,2	3062
470	150	3055	0,2	3065
470	240	3057	0,4	3067

### Dividers for plastic bins

Width	Height	Fits	Part.No
140	154	3050, 55	3070
230	154	3052, 57	3072

### Bracket for dropfront shelves

Depth	Kg	Part.No
300	0,1	3081
470	0,2	3082



### Clothes hook

Depth	Width	Height	Kg	Part.No
31	295	40	0,3	2706
31	465	40	0,5	2708

We call it a clothes hook but, needless to say, you can use it to hang up whatever you want on it.



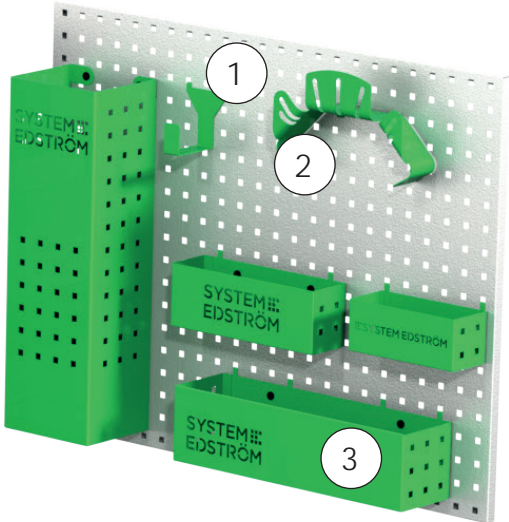
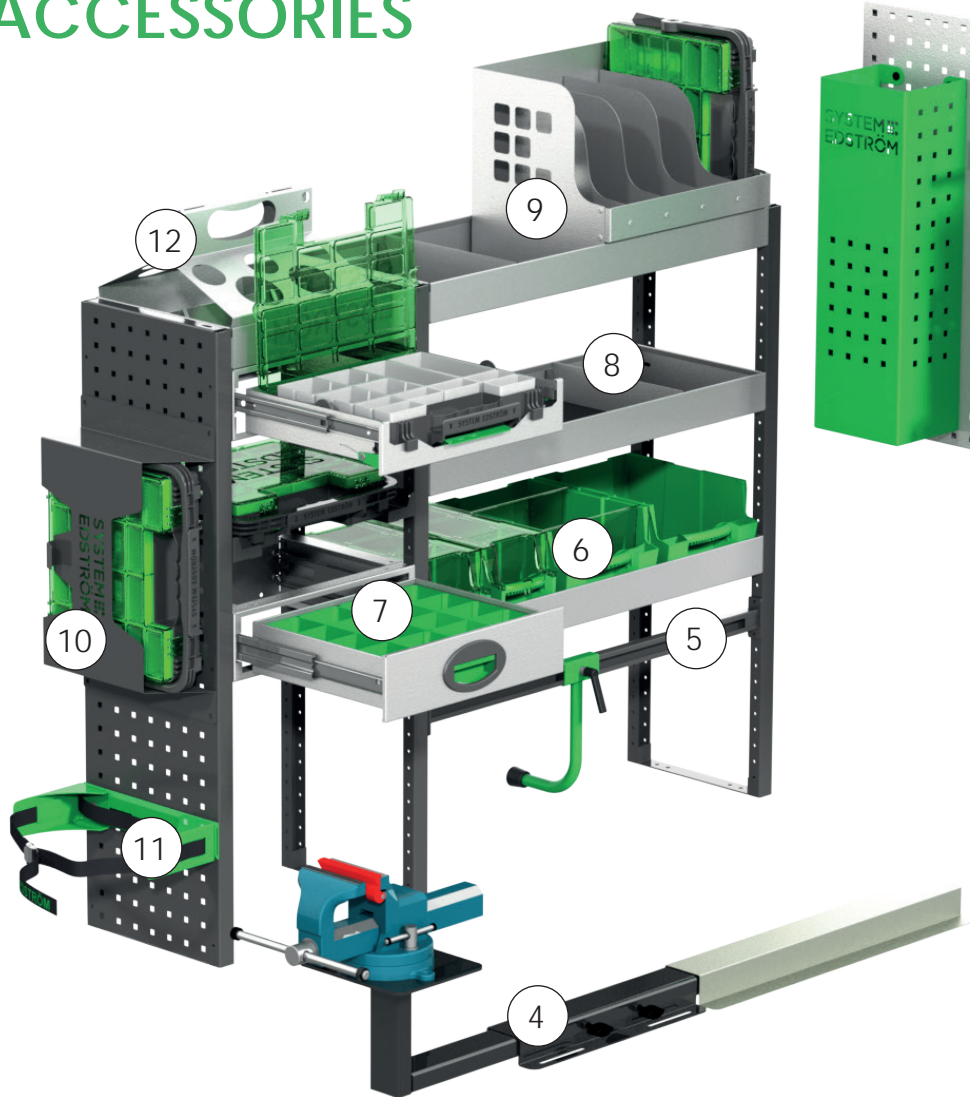
### Strap with brackets

Information	Width	Part.No
1200 mm, nylon strap	25	4365
1000 mm, elastic strap	25	4366

The brackets will fit on our pegboards.

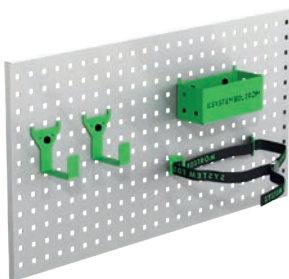


# ACCESSORIES



Pos.	Description
1	Universal hook
2	Cable/Hose rack
3	Pegboard basket
4	Vice and holders
5	Case support
6	Plastic bins
7	Drawer inserts
8	Shelf dividers
9	Tool case/File holder
10	Tool case
11	Gas bottle holders
12	Can/Tube holder

## Accessory package No. 1

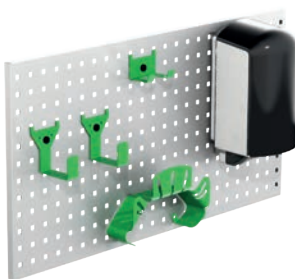


Art.No

F11001

Pegboard not included.

## Accessory package No. 2

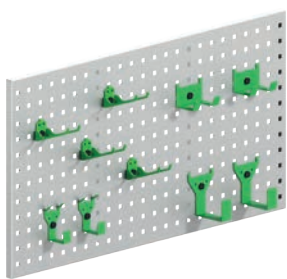


Art.No

F11002

Pegboard not included.

## Accessory package No. 3



Art.No

F11004

Pegboard not included.

For more information:  
[www.systemedstrom.co.uk](http://www.systemedstrom.co.uk)



Up to 5 years  
warranty



Crash tested



Made in Sweden

**SYSTEM  
EDSTRÖM**

EDSTROM OF SWEDEN LTD.  
7, Cronin Road  
Weldon South Industrial Estate, Corby  
Northamptonshire NN18 8 AQ

CONTACT  
Telephone 01536 203040  
Email [info@edstrom.co.uk](mailto:info@edstrom.co.uk)  
Homepage [www.systemedstrom.co.uk](http://www.systemedstrom.co.uk)