

— CREATES MOBILE WORKPLACES —

# CITROËN

## Berlingo, Dispatch & Relay



**SYSTEM**   
**EDSTRÖM**

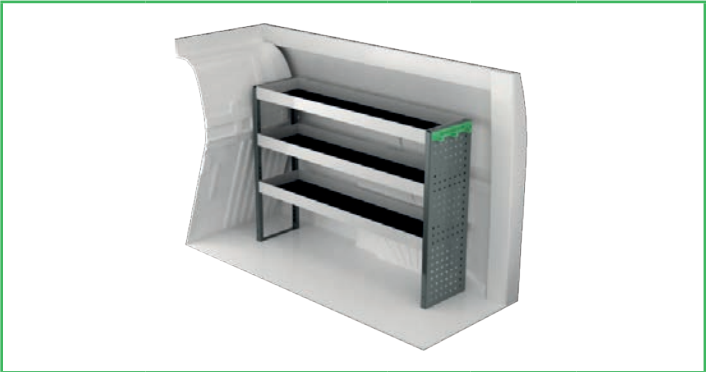
# CITROËN BERLINGO L1

Suggested hours is the recommended mounting time for experienced retailers.

On electric and hybrid vans we recommend mounting by an experienced installer. Batteries and cable harnesses for approximately 400 volt must be taken in consideration. Cost of a floor may be added.



Art.No	LxDxH	Kg	Hr.
F43101	724x300x890 mm	31	2,8



Art.No	LxDxH	Kg	Hr.
F43100	1239x300x890 mm	22	2,1



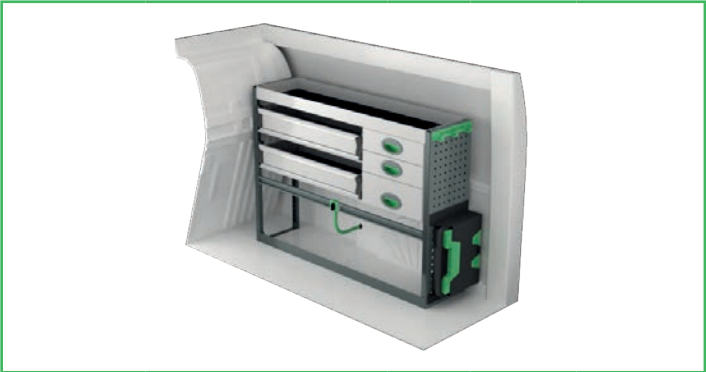
Art.No	LxDxH	Kg	Hr.
F43103	848x300x890 mm	21	2,5



Art.No	LxDxH	Kg	Hr.
F43102	1285x300x890 mm	47	3,0



Art.No	LxDxH	Kg	Hr.
F43105	939x300x890 mm	41	3,0



Art.No	LxDxH	Kg	Hr.
F43104	1239x300x890 mm	40	3,4



Art.No	Height	Kg	Hr.
F43110	190	66	6,1



Art.No	Height	Kg	Hr.
F43112	250	71	6,1



Art.No	Height	Kg	Hr.
F43111	360	88	6,6



# CITROËN BERLINGO L2

Suggested hours is the recommended mounting time for experienced retailers.

On electric and hybrid vans we recommend mounting by an experienced installer. Batteries and cable harnesses for approximately 400 volt must be taken in consideration. Cost of a floor may be added.



Art.No	LxDxH	Kg	Hr.
F43121	1138x300x890 mm	47	3,1



Art.No	LxDxH	Kg	Hr.
F43120	1662x300x890 mm	25	2,9



Art.No	LxDxH	Kg	Hr.
F43123	1138x300x1000 mm	47	3,6



Art.No	LxDxH	Kg	Hr.
F43122	1619x300x890 mm	51	3,1



Art.No	LxDxH	Kg	Hr.
F43125	1107x300x890 mm	59	4,2



Art.No	LxDxH	Kg	Hr.
F43124	1662x300x890 mm	50	4,1



Art.No	Height	Kg	Hr.
F43130	190	76	6,1



Art.No	Height	Kg	Hr.
F43132	250	81	6,1



Art.No	Height	Kg	Hr.
F43131	360	100	6,6

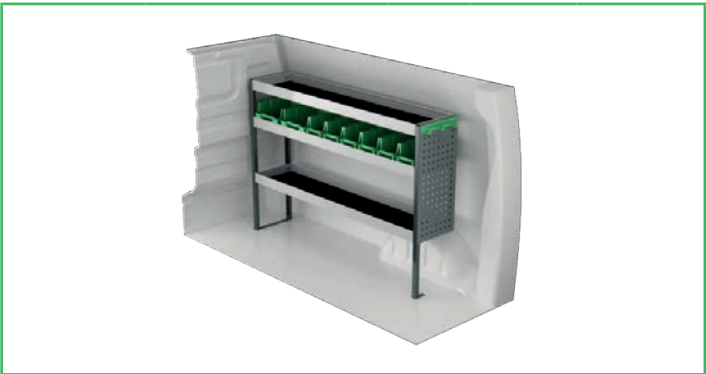
# CITROËN DISPATCH L1H1

Suggested hours is the recommended mounting time for experienced retailers.

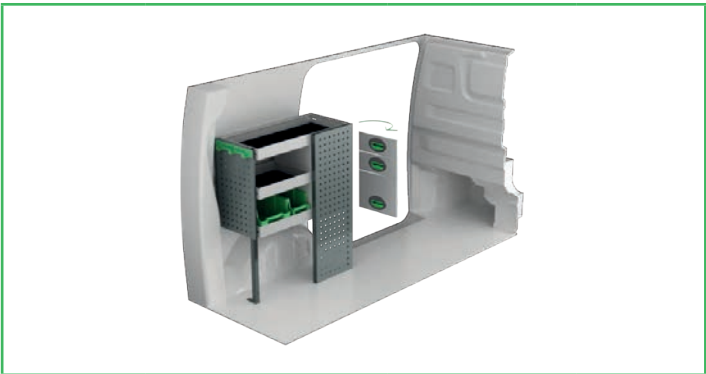
On electric and hybrid vans we recommend mounting by an experienced installer. Batteries and cable harnesses for approximately 400 volt must be taken in consideration. Cost of a floor may be added.



Art.No	LxDxH	Kg	Hr.
F42101	758x300x1000 mm	19	2,1



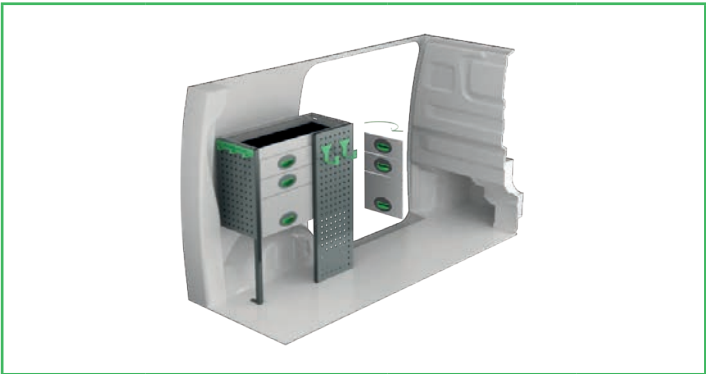
Art.No	LxDxH	Kg	Hr.
F42100	1452x300x1000 mm	27	2,1



Art.No	LxDxH	Kg	Hr.
F42103	726x300x890 mm	27	3,1



Art.No	LxDxH	Kg	Hr.
F42102	1452x300x890 mm	37	2,8



Art.No	LxDxH	Kg	Hr.
F42105	726x300x890 mm	36	3,3



Art.No	LxDxH	Kg	Hr.
F42104	1452x300x1000 mm	44	3,0



Art.No	Height	Kg	Hr.
F42110	190	81	6,1



Art.No	Height	Kg	Hr.
F42111	250	87	6,1

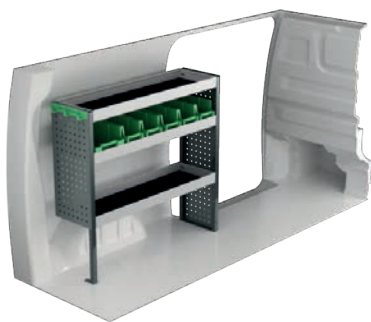


Art.No	Height	Kg	Hr.
F42112	360	106	6,4

# CITROËN DISPATCH L2H1

Suggested hours is the recommended mounting time for experienced retailers.

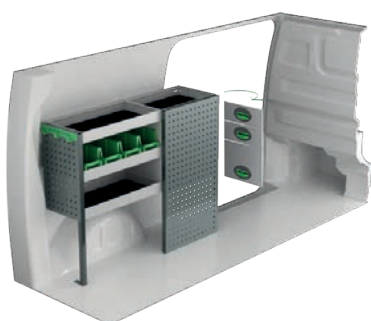
On electric and hybrid vans we recommend mounting by an experienced installer. Batteries and cable harnesses for approximately 400 volt must be taken in consideration. Cost of a floor may be added.



Art.No	LxDxH	Kg	Hr.
F42121	1061x300x1000 mm	24	2,1



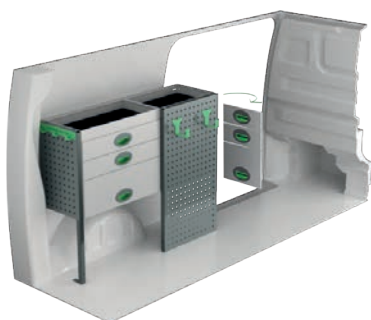
Art.No	LxDxH	Kg	Hr.
F42120	1785x300x1000 mm	33	2,9



Art.No	LxDxH	Kg	Hr.
F42123	1107x300x890 mm	35	3,1



Art.No	LxDxH	Kg	Hr.
F42122	1785x300x890 mm	42	3,6



Art.No	LxDxH	Kg	Hr.
F42125	1107x300x890 mm	46	3,3



Art.No	LxDxH	Kg	Hr.
F42124	1785x300x1000 mm	52	3,8



Art.No	Height	Kg	Hr.
F42130	190	87	6,1



Art.No	Height	Kg	Hr.
F42131	250	94	6,1

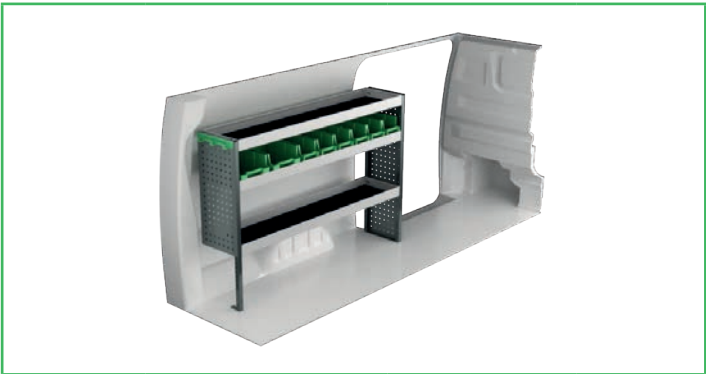


Art.No	Height	Kg	Hr.
F42132	360	128	6,7

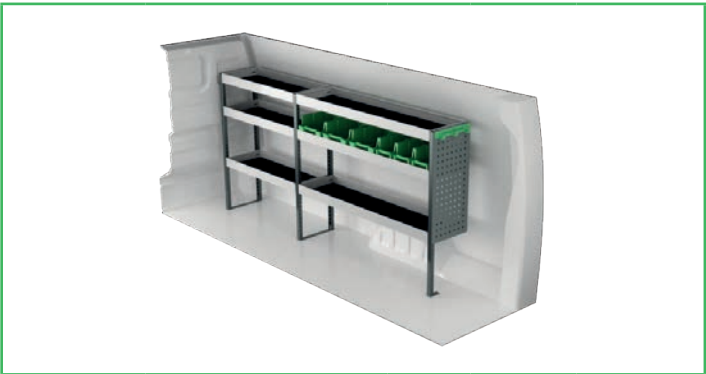
# CITROËN DISPATCH L3H1

Suggested hours is the recommended mounting time for experienced retailers.

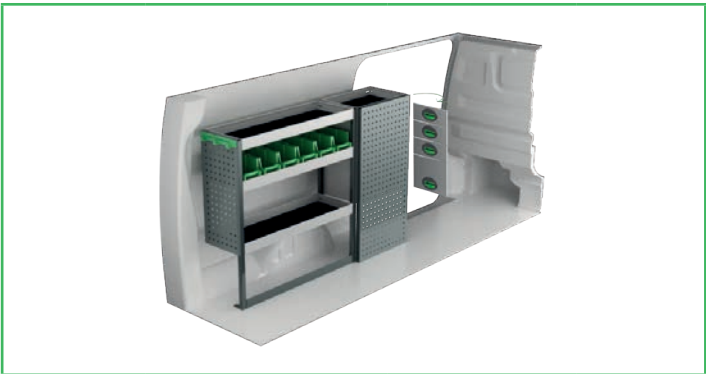
On electric and hybrid vans we recommend mounting by an experienced installer. Batteries and cable harnesses for approximately 400 volt must be taken in consideration. Cost of a floor may be added.



Art.No	LxDxH	Kg	Hr.
F42141	1453x300x1000 mm	29	2,1



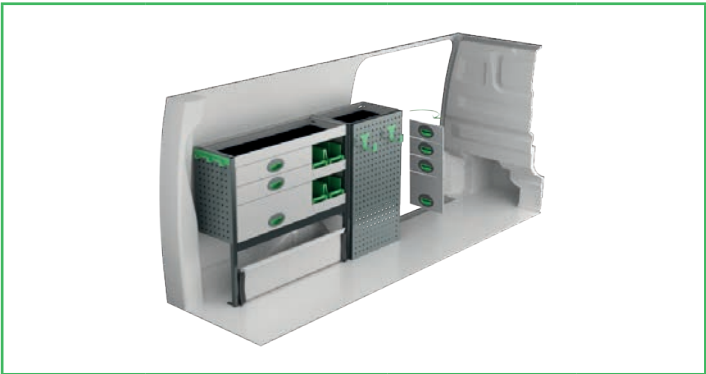
Art.No	LxDxH	Kg	Hr.
F42140	2054x300x1000 mm	35	2,9



Art.No	LxDxH	Kg	Hr.
F42143	1440x300x1000 mm	50	3,3



Art.No	LxDxH	Kg	Hr.
F42142	2054x300x890 mm	46	3,7



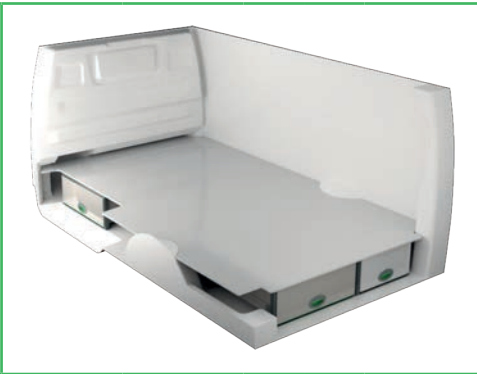
Art.No	LxDxH	Kg	Hr.
F42145	1440x300x890 mm	61	3,6



Art.No	LxDxH	Kg	Hr.
F42144	2054x300x1000 mm	55	3,9



Art.No	Height	Kg	Hr.
F42150	190	91	6,1



Art.No	Height	Kg	Hr.
F42151	250	96	6,1



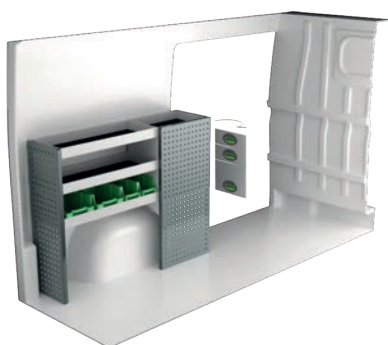
Art.No	Height	Kg	Hr.
F42152	360	130	6,7



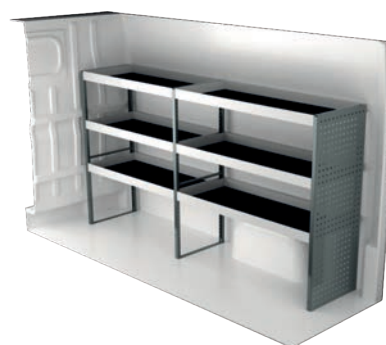
# CITROËN RELAY L1H1

Suggested hours is the recommended mounting time for experienced retailers.

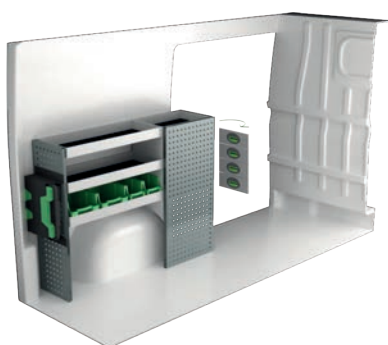
On electric and hybrid vans we recommend mounting by an experienced installer. Batteries and cable harnesses for approximately 400 volt must be taken in consideration. Cost of a floor may be added.



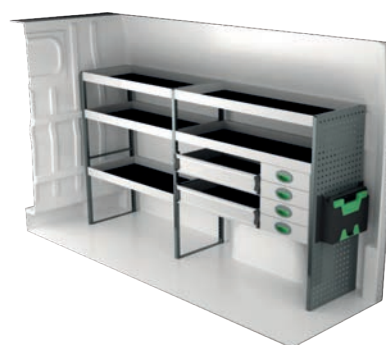
Art.No	LxDxH	Kg	Hr.
F45021	1287x300x1000 mm	38	2,9



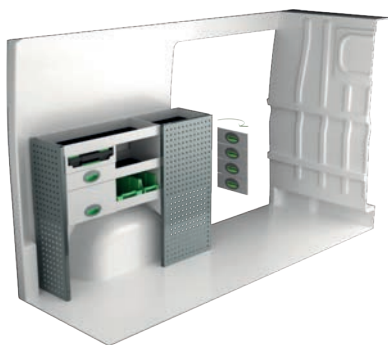
Art.No	LxDxH	Kg	Hr.
F45020	2270x470x1220 mm	53	2,5



Art.No	LxDxH	Kg	Hr.
F45023	1372x300x1000 mm	44	3,2



Art.No	LxDxH	Kg	Hr.
F45022	2355x470x1220 mm	83	3,9



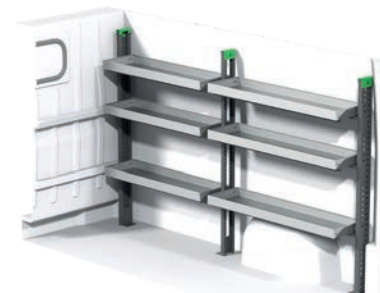
Art.No	LxDxH	Kg	Hr.
F45025	1287x300x1000 mm	52	3,5



Art.No	LxDxH	Kg	Hr.
F45024	2270x300x1515 mm	89	5,2



Art.No	LxDxH	Kg	Hr.
F45027	1252x503x1605 mm	39	2,4

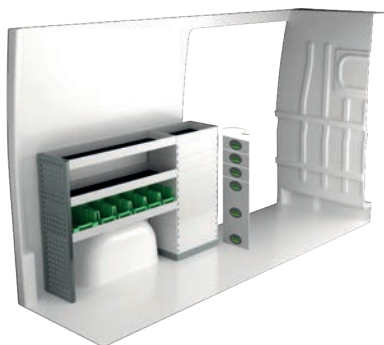


Art.No	LxDxH	Kg	Hr.
F45026	2275x503x1605 mm	67	4,8

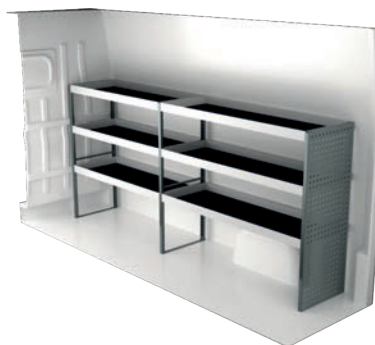
# CITROËN RELAY L2H2

Suggested hours is the recommended mounting time for experienced retailers.

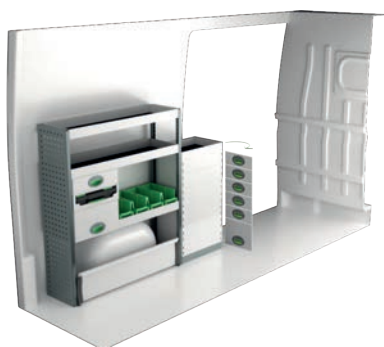
On electric and hybrid vans we recommend mounting by an experienced installer. Batteries and cable harnesses for approximately 400 volt must be taken in consideration. Cost of a floor may be added.



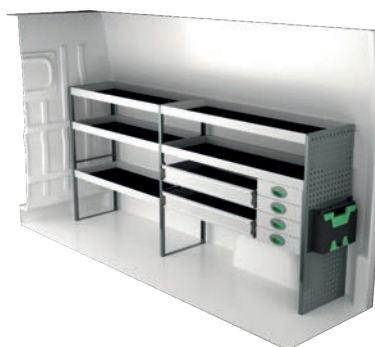
Art.No	LxDxH	Kg	Hr.
F45041	1500x300x1000 mm	55	2,8



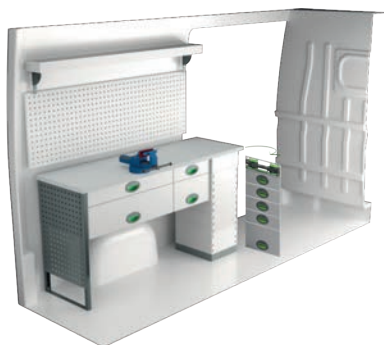
Art.No	LxDxH	Kg	Hr.
F45040	2662x470x1220 mm	59	2,5



Art.No	LxDxH	Kg	Hr.
F45043	1532x300x1220 mm	70	3,7



Art.No	LxDxH	Kg	Hr.
F45042	2747x470x1220 mm	90	3,9



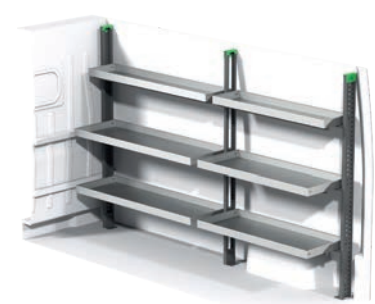
Art.No	LxDxH	Kg	Hr.
F45045	1509x470x855 mm	103	3,9



Art.No	LxDxH	Kg	Hr.
F45044	2662x300x1735 mm	110	5,8



Art.No	LxDxH	Kg	Hr.
F45047	1465x503x1770 mm	48	2,4



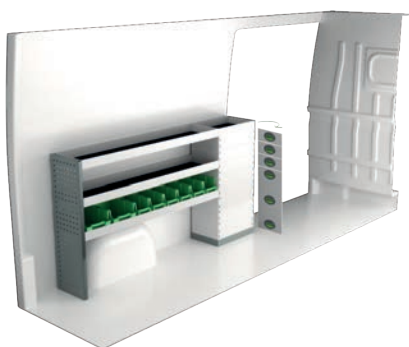
Art.No	LxDxH	Kg	Hr.
F45046	2667x503x1770 mm	83	4,8



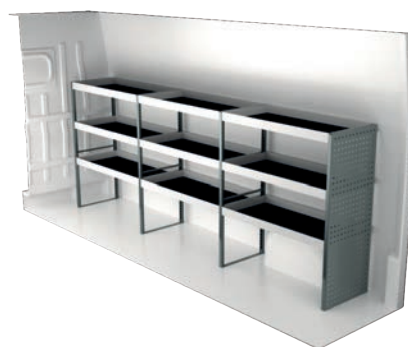
# CITROËN RELAY L3H2

Suggested hours is the recommended mounting time for experienced retailers.

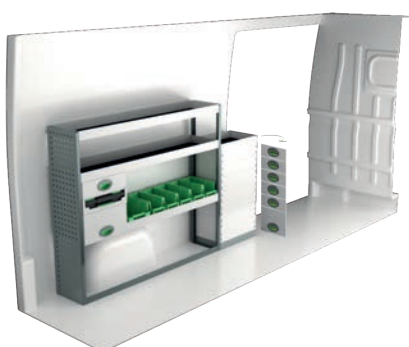
On electric and hybrid vans we recommend mounting by an experienced installer. Batteries and cable harnesses for approximately 400 volt must be taken in consideration. Cost of a floor may be added.



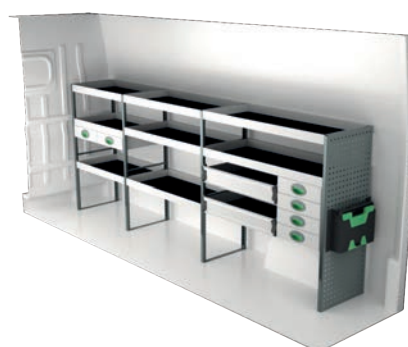
Art.No	LxDxH	Kg	Hr.
F45061	1892x300x1000 mm	60	2,8



Art.No	LxDxH	Kg	Hr.
F45060	3120x470x1220 mm	72	3,4



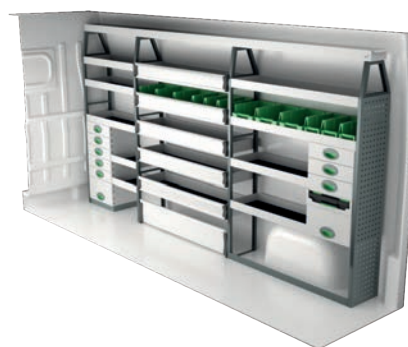
Art.No	LxDxH	Kg	Hr.
F45063	1924x300x1220 mm	75	3,5



Art.No	LxDxH	Kg	Hr.
F45062	3086x470x1220 mm	112	5,2



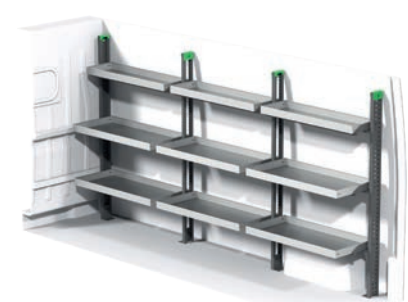
Art.No	LxDxH	Kg	Hr.
F45065	2024x470x855 mm	145	4,4



Art.No	LxDxH	Kg	Hr.
F45064	3265x300x1735 mm	147	8,5



Art.No	LxDxH	Kg	Hr.
F45067	1883x503x1770 mm	67	4,8

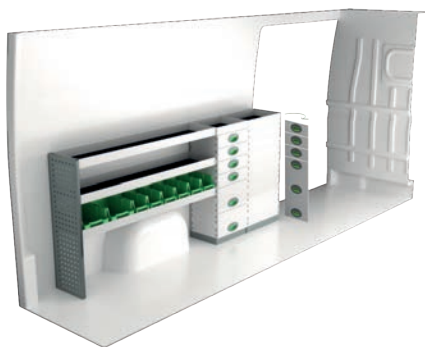


Art.No	LxDxH	Kg	Hr.
F45066	3298x503x1770 mm	104	7,3

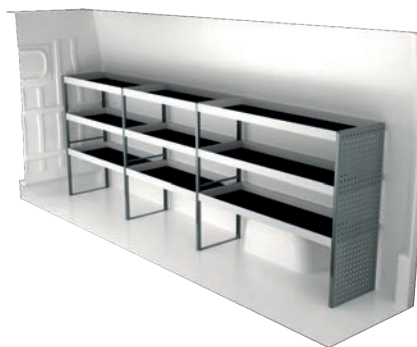
# CITROËN RELAY L4H2

Suggested hours is the recommended mounting time for experienced retailers.

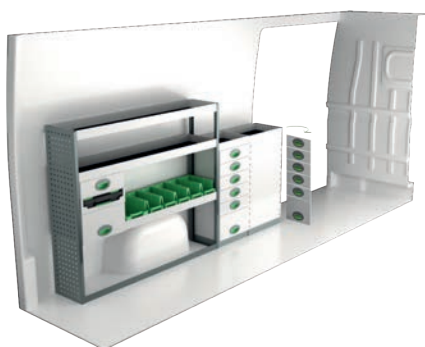
On electric and hybrid vans we recommend mounting by an experienced installer. Batteries and cable harnesses for approximately 400 volt must be taken in consideration. Cost of a floor may be added.



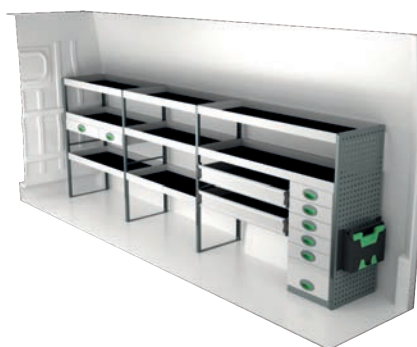
Art.No	LxDxH	Kg	Hr.
F45081	2284x300x1000 mm	89	4,1



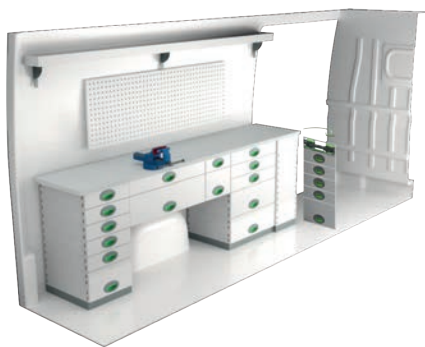
Art.No	LxDxH	Kg	Hr.
F45080	3512x470x1220 mm	78	3,4



Art.No	LxDxH	Kg	Hr.
F45083	2316x300x1220 mm	102	4,8



Art.No	LxDxH	Kg	Hr.
F45082	3597x470x1220 mm	135	5,5



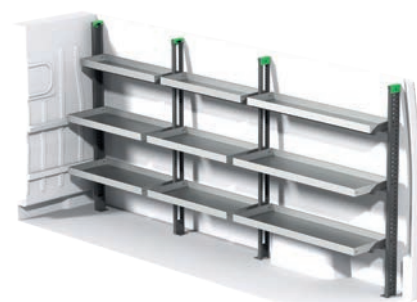
Art.No	LxDxH	Kg	Hr.
F45085	2383x470x855 mm	190	4,8



Art.No	LxDxH	Kg	Hr.
F45084	3512x300x1735 mm	159	8,6



Art.No	LxDxH	Kg	Hr.
F45087	2488x503x1770 mm	75	4,8



Art.No	LxDxH	Kg	Hr.
F45086	3511x503x1770 mm	112	7,3

# INFORMATION



## GENERALLY

The kits include what you see in the drawing as well as installation parts, rubber mats to all shelves and foam to the drawers. System Edström Bilinredningar AB is certified according to SS-EN ISO 9001:2015 to secure the administrative quality and to give us the possibility to keep a high accuracy on deliveries.

All material used in System Edström can be recycled to 100%. We are also certified according to SS-EN ISO 14001:2015.



## REMEMBER

Now that you have chosen to have System Edström in your vehicle you have taken the first and most important step to make your mobile workshop safe and functional. From here on it is up to you how safe and functional your working place will be.

Remember;

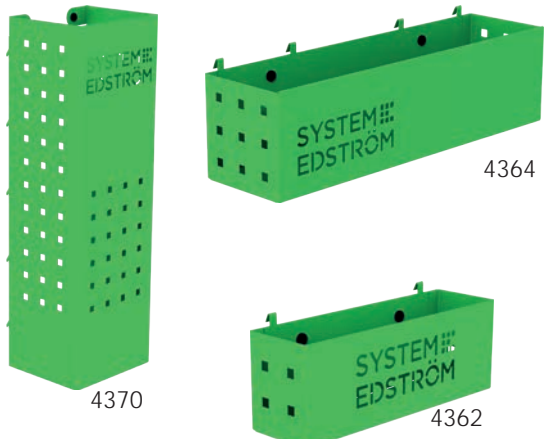
You as the driver has the full responsibility if you or any one else is injured if the cargo is poorly secured. It is also your responsibility to make sure that the interior is mounted in the safest way possible whatever your choice of workshop, even if they are professionals with knowhow and long experience.

Make sure NOT to exceed the maximum payload of the vehicle.



## SECURITY

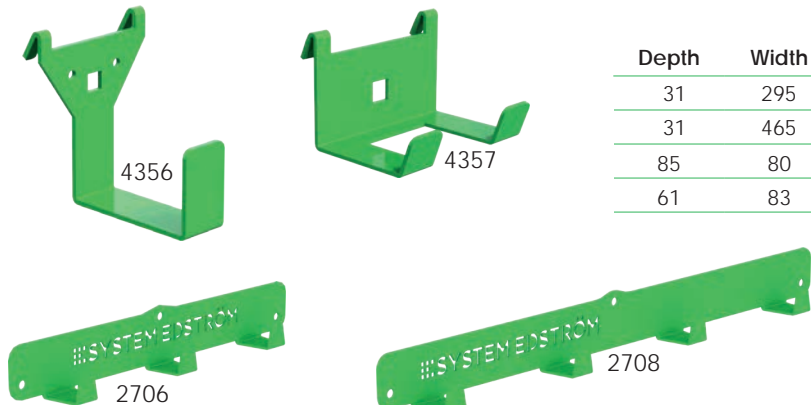
Our products are tested in two ways, the first and most important is two crashtests, one (ECE 17:07) performed by Milbrook in England and another one performed by Valutec in France (INRS NS286). Learn more about us on our homepage, [www.systemedstrom.com](http://www.systemedstrom.com).



4370 4364 4362


Depth	Width	Height	Kg	Part.No
82	200	80	0,5	4360
82	285	102	0,8	4362
122	455	122	1,5	4364
153	179	575	3,0	4370

A number of different trays that solve (almost) all storage problems.



4356 4357 2706 2708


Depth	Width	Height	Kg	Part.No
31	295	40	0,3	2706
31	465	40	0,5	2708
85	80	100	0,2	4356
61	83	55	0,1	4357



4077 4349

Depth	Width	Height	Kg	Part.No
79	267	168	0,5	4077

Depth	Width	Height	Kg	Part.No
66	194	123	0,4	4349

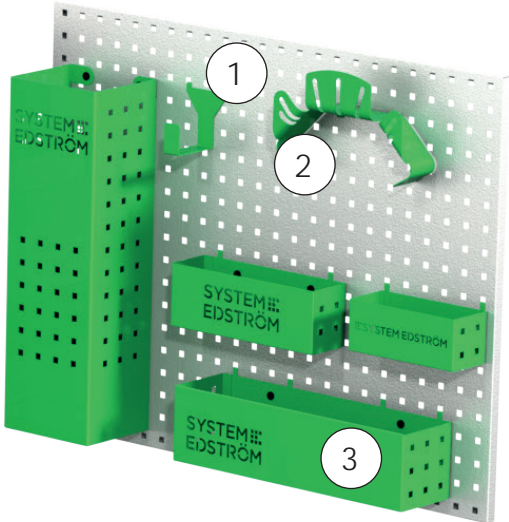
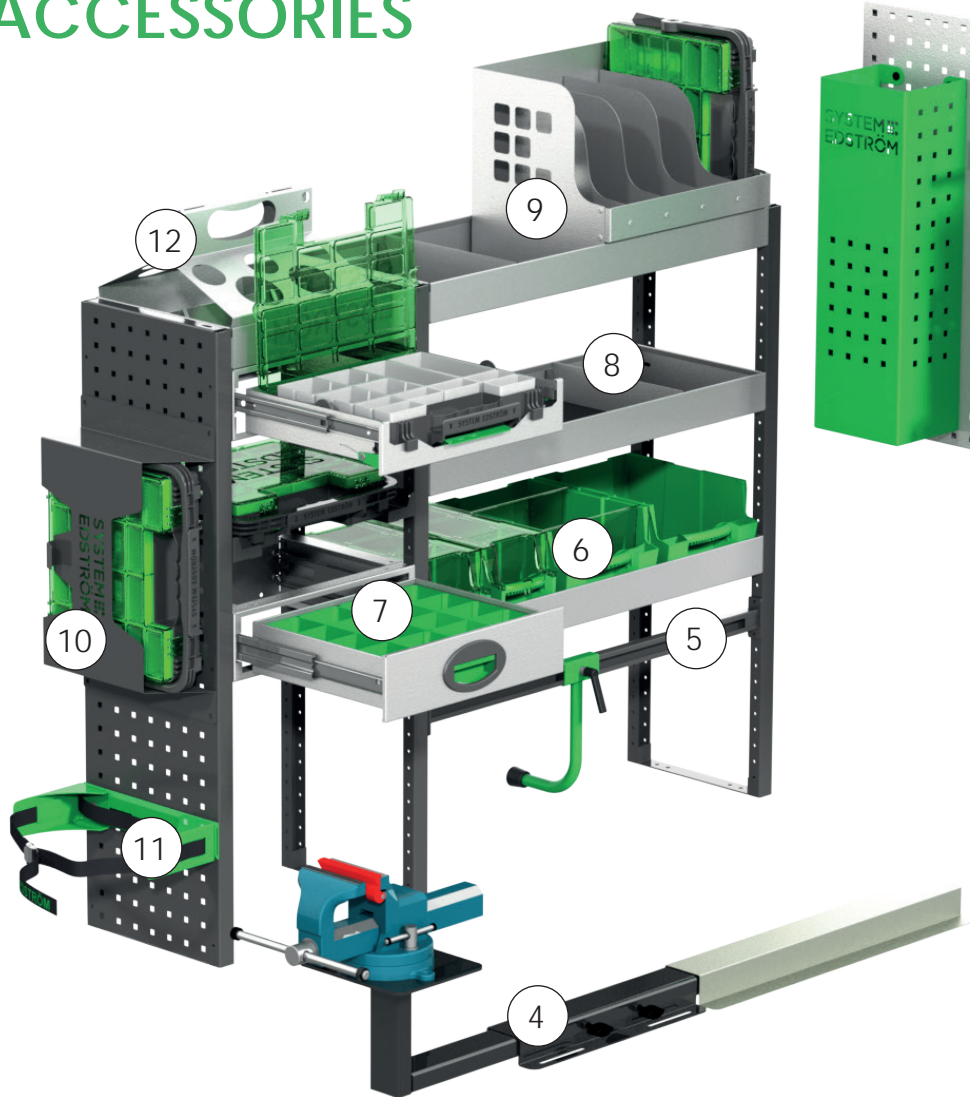


Length	Kg	Part.No
2400	5,5	T8900

Store your ladder on the inside of the roof, pull it back to the rear door in a simple operation. The aluminum rail comes in two parts with a joining piece.

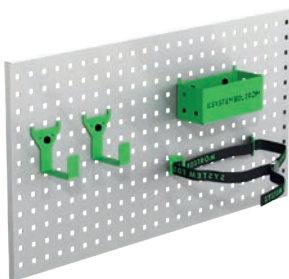


# ACCESSORIES



Pos.	Description
1	Universal hook
2	Cable/Hose rack
3	Pegboard basket
4	Vice and holders
5	Case support
6	Plastic bins
7	Drawer inserts
8	Shelf dividers
9	Tool case/File holder
10	Tool case
11	Gas bottle holders
12	Can/Tube holder

## Accessory package No. 1

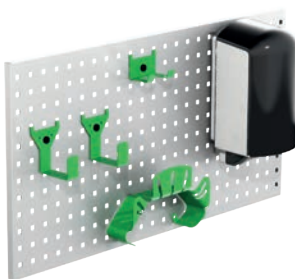


Art.No

F11001

Pegboard not included.

## Accessory package No. 2

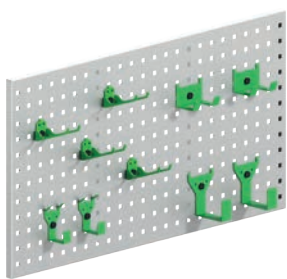


Art.No

F11002

Pegboard not included.

## Accessory package No. 3



Art.No

F11004

Pegboard not included.

For more information:  
[www.systemedstrom.co.uk](http://www.systemedstrom.co.uk)



Up to 5 years warranty



Crash tested



Made in Sweden

**SYSTEM  
EDSTRÖM**

EDSTRÖM OF SWEDEN LTD.  
7, Cronin Road  
Weldon South Industrial Estate, Corby  
Northamptonshire NN18 8 AQ

CONTACT  
Telephone 01536 203040  
Email [info@edstrom.co.uk](mailto:info@edstrom.co.uk)  
Homepage [www.systemedstrom.co.uk](http://www.systemedstrom.co.uk)